



**Water Monitoring Result at C7 - Windsor House  
Mid-Flood Tide**

Date	Time	Weather Condition	Sampling Depth m	Water Temperature °C		pH		Salinity ppt		DO Saturation %		DO mg/L		Turbidity NTU		Suspended Solids mg/L								
				Value	Average	Value	Average	Value	Average	Value	Average	Value	Average	Value	Average	Value	Average							
27/10/17	16:20	Fine	Middle	-	27.70	27.70	27.75	7.26	7.26	7.54	32.17	32.17	32.49	116.5	115.5	114.6	7.66	7.59	7.53	11.12	11.12	<u>11.11</u>	6	6.50
	16:22		Middle	-	27.80	27.80	27.75	7.82	7.82	7.54	32.80	32.80	32.49	113.7	112.5	114.6	7.47	7.39	7.53	11.12	11.08	11.11	7	
30/10/17	14:30	Fine	Middle	-	26.50	26.50	26.70	8.25	8.25	8.23	31.85	31.85	31.85	88.0	87.8	87.5	5.89	5.87	5.85	2.12	2.12	2.12	<2	<2
	14:32		Middle	-	26.90	26.90	26.70	8.20	8.20	8.23	31.84	31.84	31.85	87.2	87.1	87.5	5.83	5.82	5.85	2.12	2.13	2.12	<2	
1/11/17	13:55	Fine	Middle	-	26.80	26.80	26.80	8.26	8.26	8.26	31.89	31.89	31.89	86.9	88.3	87.9	5.81	5.91	5.88	5.73	5.76	5.75	4	4.50
	13:57		Middle	-	26.80	26.80	26.80	8.26	8.26	8.26	31.89	31.89	31.89	88.1	88.2	87.9	5.89	5.90	5.88	5.78	5.73	5.75	5	
3/11/17	16:50	Fine	Middle	-	26.60	26.60	26.60	8.28	8.28	8.28	31.88	31.88	31.89	90.5	90.9	90.7	6.07	6.10	6.09	10.78	10.91	<u>10.87</u>	8	9.00
	16:57		Middle	-	26.60	26.60	26.60	8.28	8.28	8.28	31.89	31.89	31.89	90.9	90.6	90.7	6.10	6.08	6.09	10.92	10.88	10.87	10	
6/11/17	8:00	Fine	Middle	-	24.90	24.90	24.85	8.26	8.26	8.27	32.17	32.17	32.18	83.2	86.5	85.0	5.76	5.94	5.86	2.81	2.80	2.80	7	7.50
	8:02		Middle	-	24.80	24.80	24.85	8.27	8.27	8.27	32.18	32.18	32.18	84.1	86.2	85.0	5.82	5.92	5.86	2.80	2.80	2.80	8	
8/11/17	11:20	Fine	Middle	-	26.00	26.00	26.05	8.12	8.12	8.15	32.01	32.01	32.01	74.6	73.3	72.8	5.05	4.96	4.93	6.05	6.02	5.94	4	4.50
	11:22		Middle	-	26.10	26.10	26.05	8.17	8.17	8.15	32.01	32.01	32.01	72.0	71.2	72.8	4.87	4.82	4.93	5.85	5.85	5.94	5	
10/11/17	14:40	Fine	Middle	-	26.70	26.70	26.85	8.19	8.19	8.19	32.04	32.04	32.04	83.9	84.6	84.6	5.61	5.64	5.64	8.67	8.66	8.59	12	11.00
	14:42		Middle	-	27.00	27.00	26.85	8.18	8.18	8.19	32.03	32.03	32.04	84.9	84.8	84.6	5.66	5.65	5.64	8.65	8.36	8.59	10	
13/11/17	14:05	Cloudy	Middle	-	24.60	24.60	24.55	8.19	8.19	8.19	31.98	31.98	31.98	84.6	85.5	85.2	5.88	5.94	5.92	3.45	3.44	3.44	7	7.00
	14:07		Middle	-	24.50	24.50	24.55	8.18	8.18	8.19	31.98	31.98	31.98	85.4	85.1	85.2	5.93	5.92	5.92	3.44	3.44	3.44	7	
15/11/17	15:05	Cloudy	Middle	-	25.30	25.30	25.25	8.19	8.19	8.19	31.95	31.95	31.95	81.9	83.4	83.0	5.52	5.72	5.67	2.84	2.81	2.83	5	6.00
	15:07		Middle	-	25.20	25.20	25.25	8.18	8.19	8.19	31.95	31.95	31.95	83.2	83.3	83.0	5.71	5.72	5.67	2.82	2.83	2.83	7	
17/11/17	17:55	Fine	Middle	-	25.70	25.70	25.75	8.17	8.17	8.17	31.95	31.95	31.95	85.9	86.3	85.9	5.84	5.80	5.82	5.14	5.18	5.18	4	3.50
	17:57		Middle	-	25.80	25.80	25.75	8.17	8.17	8.17	31.95	31.95	31.95	85.6	85.6	85.9	5.82	5.82	5.82	5.21	5.20	5.18	3	
20/11/17	9:17	Fine	Middle	-	23.80	23.80	23.75	7.99	7.99	8.00	32.24	32.24	32.26	97.3	97.7	96.2	6.84	6.87	6.77	6.33	6.33	6.33	4	4.00
	9:19		Middle	-	23.70	23.70	23.75	8.01	8.01	8.00	32.27	32.27	32.26	94.8	94.9	96.2	6.67	6.68	6.77	6.33	6.33	6.33	4	
22/11/17	8:15	Fine	Middle	-	23.10	23.10	23.05	8.19	8.19	8.19	31.93	31.93	31.94	80.1	79.8	80.0	5.71	5.69	5.70	2.58	2.54	2.54	11	11.00
	8:17		Middle	-	23.00	23.00	23.05	8.19	8.19	8.19	31.94	31.94	31.94	80.1	79.9	80.0	5.71	5.70	5.70	2.53	2.51	2.54	11	
24/11/17	13:10	Fine	Middle	-	23.60	23.60	23.65	8.26	8.26	8.27	32.06	32.06	32.06	88.2	88.0	88.0	6.22	6.21	6.21	7.92	7.99	7.99	7	7.50
	13:12		Middle	-	23.70	23.70	23.65	8.27	8.27	8.27	32.06	32.06	32.06	87.7	87.9	88.0	6.19	6.20	6.21	8.02	8.04	7.99	8	

Remarks:  
Single underline denotes exceedance over Action Level.  
Double underline denotes exceedance over Limit Level.



**Water Monitoring Result at C1 - HKCEC Extension  
Mid-Flood Tide**

Date	Time	Weather Condition	Sampling Depth		Water Temperature			pH			Salinity			DO Saturation		DO		Turbidity		Suspended Solids				
					°C			-			ppt			%		mg/L		NTU		mg/L				
			m	Value	Average	Value	Average	Value	Average	Value	Average	Value	Average	Value	Average	Value	Average	Value	Average	Value	Average	Value	Average	
27/10/17	15:33	Fine	Middle	3.5	26.90	26.90	26.93	7.79	7.79	7.80	32.50	32.50	32.49	107.7	107.4	104.4	7.16	7.06	6.93	7.02	7.04	7.05	4	4.50
	15:35		Middle	3.5	26.90	27.00		7.80	7.80		32.48	32.48		103.9	98.4		6.91	6.59		7.05	7.09		5	
30/10/17	14:10	Fine	Middle	3.0	25.60	25.60	25.60	8.27	8.27	8.27	32.11	32.11	32.11	86.1	87.3	87.7	5.87	5.91	5.97	5.69	5.68	5.61	6	5.50
	14:12		Middle	3.0	25.60	25.60		8.27	8.27		32.11	32.11		88.8	88.4		6.05	6.03		5.55	5.53		5	
1/11/17	15:25	Fine	Middle	2.5	25.70	25.70	25.70	8.29	8.29	8.29	32.13	32.13	32.13	90.6	90.6	90.7	6.17	6.17	6.17	4.15	4.06	4.10	9	8.00
	15:27		Middle	2.5	25.70	25.70		8.29	8.29		32.13	32.13		90.8	90.6		6.18	6.17		4.12	4.07		7	
3/11/17	16:05	Fine	Middle	2.5	25.40	25.40	25.40	8.27	8.27	8.27	32.21	32.21	32.21	88.0	88.7	88.5	6.02	6.07	6.05	8.05	8.07	8.02	7	7.50
	16:07		Middle	2.5	25.40	25.40		8.27	8.27		32.21	32.21		88.5	88.8		6.05	6.07		8.00	7.96		8	
6/11/17	10:30	Fine	Middle	3.0	24.70	24.70	24.65	8.32	8.32	8.32	32.37	32.37	32.37	89.1	88.5	88.8	6.16	6.13	6.15	10.68	10.09	<u>10.28</u>	9	8.50
	10:32		Middle	3.0	24.60	24.60		8.32	8.32		32.37	32.37		88.5	89.2		6.12	6.17		10.15	10.19		8	
8/11/17	10:26	Fine	Middle	3.5	25.40	25.40	25.40	8.23	8.23	8.23	32.26	32.26	32.26	73.9	74.3	73.5	5.05	5.08	5.02	11.81	11.78	<u>11.71</u>	13	13.00
	10:28		Middle	3.5	25.40	25.40		8.23	8.23		32.26	32.26		73.7	72.2		5.03	4.93		11.66	11.58		13	
10/11/17	11:10	Fine	Middle	2.5	25.20	25.20	25.20	8.20	8.20	8.20	32.28	32.28	32.28	84.0	85.0	85.0	5.82	5.82	5.84	9.55	9.56	<u>9.54</u>	10	10.00
	11:12		Middle	2.5	25.20	25.20		8.20	8.20		32.28	32.28		85.1	85.8		5.83	5.88		9.57	9.48		10	
13/11/17	15:24	Cloudy	Middle	2.5	24.00	24.00	24.00	8.23	8.23	8.24	32.17	32.17	32.17	70.6	72.9	71.0	4.96	5.10	4.98	9.07	9.05	9.01	11	11.50
	15:26		Middle	2.5	24.00	24.00		8.24	8.24		32.17	32.17		71.4	69.1		5.00	4.84		8.98	8.95		12	
15/11/17	17:20	Cloudy	Middle	3.0	24.20	24.20	24.20	8.21	8.21	8.22	32.22	32.22	32.22	84.2	85.3	84.8	5.87	5.94	5.91	8.79	8.79	8.78	10	11.00
	17:22		Middle	3.0	24.20	24.20		8.22	8.22		32.22	32.22		85.2	84.6		5.94	5.90		8.76	8.77		12	
17/11/17	16:35	Fine	Middle	3.0	25.20	25.20	25.20	8.19	8.19	8.19	32.10	32.10	32.10	82.3	82.3	82.3	5.66	5.66	5.66	5.77	5.70	5.70	5	5.00
	16:37		Middle	3.0	25.20	25.20		8.19	8.19		32.10	32.10		82.3	82.4		5.66	5.67		5.67	5.67		5	
20/11/17	8:46	Fine	Middle	2.5	23.50	23.50	23.40	7.61	7.61	7.68	32.31	32.31	32.37	152.6	152.0	151.0	10.79	10.75	10.69	10.23	10.25	<u>10.29</u>	9	8.00
	8:48		Middle	2.5	23.30	23.30		7.74	7.74		32.42	32.42		150.0	149.2		10.62	10.60		10.30	10.36		7	
22/11/17	10:40	Fine	Middle	2.5	23.30	23.30	23.30	8.24	8.24	8.25	32.27	32.27	32.27	89.0	88.8	88.5	6.30	6.29	6.27	9.47	9.47	<u>9.46</u>	11	11.00
	10:42		Middle	2.5	23.30	23.30		8.25	8.25		32.27	32.27		88.4	87.7		6.27	6.22		9.46	9.45		11	
24/11/17	12:25	Fine	Middle	4.0	22.20	22.20	22.20	8.28	8.28	8.28	32.36	32.36	32.36	90.7	90.6	90.6	6.55	6.54	6.54	4.69	4.70	4.72	5	5.00
	12:27		Middle	4.0	22.20	22.20		8.28	8.28		32.36	32.36		90.8	90.2		6.56	6.51		4.73	4.77		5	

Remarks:  
Single underline denotes exceedance over Action Level.  
Double underline denotes exceedance over Limit Level.



**Water Monitoring Result at P1 - HKCEC Phase I  
Mid-Flood Tide**

Date	Time	Weather Condition	Sampling Depth		Water Temperature		pH		Salinity		DO Saturation		DO		Turbidity		Suspended Solids							
					°C		-		ppt		%		mg/L		NTU		mg/L							
			m	Value	Average	Value	Average	Value	Average	Value	Average	Value	Average	Value	Average	Value	Average	Value	Average					
27/10/17	15:15	Fine	Middle	3.5	27.70	27.80	27.83	7.45	7.45	7.49	32.47	32.48	32.49	108.5	107.1	106.8	7.10	6.92	6.97	6.75	6.78	6.79	4	4.00
	15:17		Middle	3.5	27.90	27.90		7.52	7.53		32.50	32.49		105.9	105.6		6.93	6.91		6.81	6.82		4	
30/10/17	13:50	Fine	Middle	3.0	27.10	27.10	26.60	8.26	8.26	8.26	32.26	32.26	32.30	88.9	89.0	88.2	6.00	6.01	5.96	4.50	4.50	4.45	6	7.00
	13:52		Middle	3.0	26.10	26.10		8.26	8.26		32.33	32.33		87.7	87.3		5.92	5.89		4.41	4.39		8	
1/11/17	15:05	Fine	Middle	2.5	26.40	26.40	26.50	8.27	8.27	8.28	32.33	32.33	32.33	91.9	91.4	91.7	6.16	6.12	6.14	2.78	2.80	2.73	8	9.00
	15:07		Middle	2.5	26.60	26.60		8.28	8.28		32.32	32.32		91.7	91.7		6.14	6.14		2.72	2.61		10	
3/11/17	15:40	Fine	Middle	2.5	26.10	26.10	26.15	8.27	8.27	8.27	32.41	32.41	32.41	89.9	89.6	89.6	6.06	6.04	6.04	6.02	6.10	6.10	8	8.50
	15:42		Middle	2.5	26.20	26.20		8.26	8.26		32.41	32.41		89.6	89.4		6.04	6.02		6.11	6.15		9	
6/11/17	10:10	Fine	Middle	3.0	24.40	24.40	24.45	8.28	8.28	8.29	32.35	32.35	32.35	86.0	87.4	87.3	5.94	6.06	6.05	7.24	7.19	7.19	9	8.00
	10:12		Middle	3.0	24.50	24.50		8.29	8.29		32.35	32.35		87.8	87.8		6.09	6.09		7.17	7.16		7	
8/11/17	10:10	Fine	Middle	3.5	25.70	25.70	25.70	8.20	8.20	8.21	32.29	32.29	32.29	77.5	77.0	76.3	5.27	5.25	5.19	10.08	10.07	10.07	11	10.50
	10:12		Middle	3.5	25.70	25.70		8.22	8.22		32.29	32.29		75.7	75.1		5.14	5.10		10.06	10.06		<u>10.07</u>	
10/11/17	10:50	Fine	Middle	2.5	25.40	25.40	25.50	8.18	8.18	8.18	32.32	32.32	32.32	81.9	83.0	82.1	5.58	5.63	5.59	6.69	6.66	6.61	9	9.50
	10:52		Middle	2.5	25.60	25.60		8.18	8.18		32.32	32.32		81.1	82.2		5.53	5.60		6.55	6.52		10	
13/11/17	15:07	Cloudy	Middle	2.5	23.90	23.90	23.90	8.20	8.20	8.21	32.07	32.07	32.08	66.2	66.4	66.4	4.65	4.66	4.66	5.88	5.88	5.89	7	6.50
	15:09		Middle	2.5	23.90	23.90		8.21	8.21		32.08	32.08		66.7	66.1		4.68	4.64		5.88	5.91		6	
15/11/17	17:00	Cloudy	Middle	3.0	24.20	24.20	24.25	8.20	8.20	8.20	32.19	32.19	32.20	85.6	85.5	85.5	5.97	5.96	5.96	6.03	6.02	6.04	6	5.50
	17:02		Middle	3.0	24.30	24.30		8.20	8.20		32.22	32.20		85.6	85.2		5.97	5.94		6.04	6.08		5	
17/11/17	16:15	Fine	Middle	3.0	25.30	25.30	25.35	8.16	8.16	8.17	32.16	32.16	32.17	86.0	86.7	87.2	5.88	5.92	5.95	6.24	6.25	6.24	6	5.00
	16:17		Middle	3.0	25.40	25.40		8.18	8.18		32.17	32.17		87.9	88.0		6.00	6.01		6.25	6.23		4	
20/11/17	8:30	Fine	Middle	2.5	23.50	23.50	23.35	7.81	7.81	7.83	32.34	32.34	32.35	136.1	136.2	135.4	9.64	9.65	9.59	7.96	7.95	7.96	6	6.50
	8:32		Middle	2.5	23.20	23.20		7.85	7.85		32.36	32.36		135.3	133.8		9.58	9.48		7.96	7.95		7	
22/11/17	10:20	Fine	Middle	2.5	23.20	23.20	23.25	8.24	8.24	8.24	32.20	32.20	32.20	87.9	87.1	87.4	6.23	6.17	6.20	6.76	6.72	6.71	8	7.50
	10:22		Middle	2.5	23.30	23.30		8.23	8.23		32.20	32.20		87.6	87.1		6.21	6.17		6.69	6.65		7	
24/11/17	12:05	Fine	Middle	4.0	22.80	22.80	22.80	8.26	8.26	8.26	32.37	32.37	32.37	91.5	91.6	91.8	6.53	6.54	6.55	4.10	4.00	4.10	4	4.50
	12:07		Middle	4.0	22.80	22.80		8.26	8.26		32.37	32.37		91.9	92.1		6.56	6.57		4.12	4.17		5	

Remarks:  
Single underline denotes exceedance over Action Level.  
Double underline denotes exceedance over Limit Level.



**Water Monitoring Result at P3 - APA  
Mid-Flood Tide**

Date	Time	Weather Condition	Sampling Depth m		Water Temperature °C		pH		Salinity ppt		DO Saturation %		DO mg/L		Turbidity NTU		Suspended Solids mg/L							
					Value	Average	Value	Average	Value	Average	Value	Average	Value	Average	Value	Average	Value	Average						
27/10/17	15:20	Fine	Middle	3.5	27.20	27.20	27.25	7.65	7.65	7.67	32.48	32.48	32.48	105.1	105.8	104.9	6.95	7.00	6.94	6.03	6.03	6.03	5	5.00
	15:22		Middle	3.5	27.30	27.30		7.69	7.69		32.47	32.47		102.8	105.9		6.80	7.00		6.03	6.02		5	
30/10/17	13:55	Fine	Middle	3.0	25.40	25.40	25.40	8.27	8.27	8.27	32.18	32.18	32.18	86.6	86.7	87.0	5.92	5.93	5.95	5.68	5.73	5.76	4	5.00
	13:57		Middle	3.0	25.40	25.40		8.26	8.26		32.18	32.18		87.8	86.7		6.00	5.93		5.85	5.77		6	
1/11/17	15:10	Fine	Middle	2.5	25.90	25.90	25.90	8.29	8.29	8.29	32.17	32.17	32.17	88.8	88.6	88.7	6.02	6.01	6.01	2.37	2.37	2.34	6	6.50
	15:12		Middle	2.5	25.90	25.90		8.29	8.29		32.17	32.17		88.2	89.1		5.98	6.03		2.36	2.25		7	
3/11/17	15:45	Fine	Middle	2.5	25.40	25.40	25.40	8.27	8.27	8.27	32.30	32.30	32.30	88.0	89.3	88.7	6.01	6.10	6.06	7.35	7.39	7.35	7	7.50
	15:47		Middle	2.5	25.40	25.40		8.27	8.27		32.30	32.30		88.3	89.2		6.05	6.09		7.40	7.27		8	
6/11/17	10:15	Fine	Middle	3.0	24.60	24.60	24.60	8.30	8.30	8.30	32.33	32.33	32.33	85.4	85.5	85.4	5.91	5.92	5.91	7.15	7.15	7.13	5	5.50
	10:17		Middle	3.0	24.60	24.60		8.30	8.30		32.33	32.33		85.4	85.2		5.91	5.91		7.12	7.11		6	
8/11/17	10:14	Fine	Middle	3.5	25.40	25.40	25.45	8.22	8.22	8.22	32.25	32.25	32.24	71.4	69.8	69.9	4.87	4.77	4.77	10.67	10.87	<u>10.87</u>	10	11.00
	10:16		Middle	3.5	25.50	25.50		8.22	8.22		32.23	32.23		68.5	69.8		4.68	4.76		10.96	10.97		12	
10/11/17	10:55	Fine	Middle	2.5	25.20	25.20	25.15	8.19	8.19	8.19	32.09	32.09	32.10	81.3	81.5	81.0	5.59	5.60	5.57	6.03	6.17	6.16	10	9.50
	10:57		Middle	2.5	25.10	25.10		8.19	8.19		32.11	32.11		80.2	80.8		5.51	5.56		6.20	6.23		9	
13/11/17	15:11	Cloudy	Middle	2.5	24.20	24.20	24.20	8.21	8.21	8.22	32.16	32.16	32.17	66.7	65.0	64.3	4.65	4.53	4.48	6.50	6.62	6.42	10	11.00
	15:13		Middle	2.5	24.20	24.20		8.22	8.22		32.18	32.18		62.7	62.7		4.37	4.38		6.28	6.26		12	
15/11/17	17:05	Cloudy	Middle	3.0	23.90	23.90	23.95	8.20	8.20	8.20	32.19	32.19	32.19	86.7	87.0	86.8	6.08	6.10	6.08	7.18	7.16	7.16	7	6.00
	17:07		Middle	3.0	24.00	24.00		8.20	8.20		32.18	32.18		86.8	86.6		6.08	6.07		7.15	7.13		5	
17/11/17	16:20	Fine	Middle	3.0	25.10	25.10	25.10	8.17	8.17	8.17	32.15	32.15	32.15	85.1	85.6	85.6	5.85	5.88	5.88	6.92	6.90	6.82	5	6.00
	16:22		Middle	3.0	25.10	25.10		8.17	8.17		32.15	32.15		85.7	85.8		5.89	5.89		6.76	6.70		7	
20/11/17	8:34	Fine	Middle	2.5	23.50	23.50	23.45	7.88	7.88	7.89	32.34	32.34	32.35	123.7	123.5	122.3	8.74	8.72	8.64	9.35	9.23	<u>9.26</u>	8	8.00
	8:36		Middle	2.5	23.40	23.40		7.90	7.90		32.36	32.36		121.8	120.2		8.60	8.49		9.23	9.23		8	
22/11/17	10:25	Fine	Middle	2.5	22.90	22.90	22.95	8.24	8.24	8.24	32.22	32.22	32.23	86.6	87.0	86.9	6.17	6.20	6.19	6.75	6.77	6.79	6	7.00
	10:27		Middle	2.5	23.00	23.00		8.23	8.23		32.23	32.23		86.9	86.9		6.20	6.20		6.78	6.84		8	
24/11/17	12:10	Fine	Middle	4.0	22.40	22.40	22.40	8.26	8.26	8.26	32.33	32.33	32.34	86.7	86.6	86.8	6.23	6.23	6.26	3.90	3.99	3.97	4	4.00
	12:12		Middle	4.0	22.40	22.40		8.26	8.26		32.34	32.34		86.7	87.0		6.27	6.30		4.00	3.99		4	

Remarks:  
Single underline denotes exceedance over Action Level.  
Double underline denotes exceedance over Limit Level.



**Water Monitoring Result at P4 - SOC  
Mid-Flood Tide**

Date	Time	Weather Condition	Sampling Depth		Water Temperature			pH			Salinity			DO Saturation			DO		Turbidity			Suspended Solids		
			m		°C		-		ppt		%		mg/L		NTU		mg/L							
					Value	Average	Value	Average	Value	Average	Value	Average	Value	Average	Value	Average	Value	Average	Value	Average				
27/10/17	15:24	Fine	Middle	3.5	26.90	27.00	26.98	7.72	7.72	7.73	32.35	32.44	32.43	110.5	109.1	108.9	7.32	7.23	7.23	6.05	6.04	6.04	3	3.50
	15:26		Middle	3.5	27.00	27.00		7.74	7.74		32.47	32.47		108.4	107.4		7.20	7.15		6.04	6.04		4	
30/10/17	14:00	Fine	Middle	3.0	25.30	25.30	25.60	8.27	8.27	8.27	32.13	32.13	32.13	86.9	86.7	87.3	5.95	5.94	5.98	4.50	4.38	4.47	5	5.00
	14:02		Middle	3.0	25.90	25.90		8.27	8.27		32.13	32.13		87.5	87.9		5.99	6.02		4.59	4.39		5	
1/11/17	15:15	Fine	Middle	2.5	25.60	25.60	25.65	8.29	8.29	8.29	32.13	32.13	32.13	90.5	90.8	90.2	6.16	6.18	6.14	2.17	2.15	2.16	9	10.00
	15:17		Middle	2.5	25.70	25.70		8.29	8.29		32.12	32.12		89.1	90.3		6.06	6.14		2.15	2.15		11	
3/11/17	15:50	Fine	Middle	2.5	25.20	25.20	25.20	8.27	8.27	8.27	32.25	32.25	32.25	88.0	88.6	88.7	6.03	6.07	6.08	7.28	7.27	7.26	7	8.00
	15:52		Middle	2.5	25.20	25.20		8.27	8.27		32.25	32.25		89.2	89.1		6.11	6.11		7.25	7.23		9	
6/11/17	10:20	Fine	Middle	3.0	24.60	24.60	24.60	8.31	8.31	8.32	32.36	32.36	33.61	87.2	87.9	87.9	6.04	6.09	6.09	9.05	9.06	9.06	15	15.00
	10:22		Middle	3.0	24.60	24.60		8.32	8.32		37.36	32.36		88.2	88.2		6.11	6.11		9.06	9.06		15	
8/11/17	10:18	Fine	Middle	3.5	25.50	25.50	25.50	8.22	8.22	8.23	32.24	32.24	32.24	73.4	72.5	72.6	5.01	4.95	4.96	11.25	11.17	<u>11.01</u>	12	11.00
	10:20		Middle	3.5	25.50	25.50		8.23	8.23		32.24	32.24		72.3	72.3		4.93	4.93		11.00	10.63		10	
10/11/17	11:00	Fine	Middle	2.5	25.10	25.10	25.10	8.19	8.19	8.19	32.30	32.30	32.30	84.1	84.1	84.3	5.77	5.79	5.79	8.89	8.79	8.74	17	<u>16.00</u>
	11:02		Middle	2.5	25.10	25.10		8.19	8.19		32.30	32.30		84.6	84.2		5.81	5.78		8.64	8.65		15	
13/11/17	15:15	Cloudy	Middle	2.5	24.10	24.10	24.05	8.22	8.22	8.22	32.28	32.28	32.28	67.7	66.9	66.4	4.73	4.62	4.63	7.70	7.65	7.67	9	9.50
	15:17		Middle	2.5	24.00	24.00		8.22	8.22		32.27	32.27		65.5	65.6		4.57	4.58		7.65	7.69		10	
15/11/17	17:10	Cloudy	Middle	3.0	24.00	24.00	24.00	8.21	8.21	8.21	32.20	32.20	32.20	85.9	85.7	85.6	6.01	6.00	5.99	8.98	8.97	9.00	10	10.50
	17:12		Middle	3.0	24.00	24.00		8.21	8.21		32.20	32.20		85.7	85.0		6.00	5.95		9.02	9.02		11	
17/11/17	16:25	Fine	Middle	3.0	25.00	25.00	25.00	8.18	8.18	8.18	32.14	32.14	32.14	82.0	83.4	83.3	5.65	5.74	5.74	6.44	6.42	6.43	7	7.00
	16:27		Middle	3.0	25.00	25.00		8.18	8.18		32.14	32.14		83.9	83.9		5.77	5.78		6.42	6.43		7	
20/11/17	8:38	Fine	Middle	2.5	23.30	23.30	23.25	7.92	7.92	7.93	32.40	32.40	32.40	96.0	95.4	95.4	6.80	6.75	6.76	8.57	8.56	8.59	7	7.50
	8:40		Middle	2.5	23.20	23.20		7.93	7.93		32.40	32.40		95.3	95.0		6.75	6.73		8.61	8.60		8	
22/11/17	10:30	Fine	Middle	2.5	22.90	22.90	22.90	8.24	8.24	8.24	32.25	32.25	32.25	86.1	86.2	86.3	6.14	6.15	6.16	7.49	7.45	7.45	8	9.00
	10:32		Middle	2.5	22.90	22.90		8.24	8.24		32.25	32.25		86.6	86.4		6.18	6.16		7.44	7.43		10	
24/11/17	12:15	Fine	Middle	4.0	22.50	22.50	22.50	8.26	8.26	8.27	32.35	32.35	32.35	86.8	86.8	86.4	6.23	6.23	6.20	4.21	4.37	4.33	5	4.50
	12:17		Middle	4.0	22.50	22.50		8.27	8.27		32.35	32.35		86.2	85.7		6.19	6.15		4.37	4.37		4	

Remarks:  
Single underline denotes exceedance over Action Level.  
Double underline denotes exceedance over Limit Level.



**Water Monitoring Result at P5 - WCT / RT / IT  
Mid-Flood Tide**

Date	Time	Weather Condition	Sampling Depth		Water Temperature			pH			Salinity			DO Saturation		DO		Turbidity		Suspended Solids				
					°C			-			ppt			%		mg/L		NTU		mg/L				
			m	Value	Average	Value	Average	Value	Average	Value	Average	Value	Average	Value	Average	Value	Average	Value	Average	Value	Average	Value	Average	
27/10/17	15:29	Fine	Middle	3.5	26.90	27.00	26.98	7.76	7.76	7.77	32.23	32.42	32.40	104.2	102.2	101.7	6.77	6.78	6.71	6.09	6.10	6.10	6	7.00
	15:31		Middle	3.5	26.90	27.10		7.77	7.78		32.48	32.48		100.0	100.4		6.64	6.66		6.11	6.11		8	
30/10/17	14:05	Fine	Middle	3.0	25.20	25.20	25.20	8.27	8.27	8.27	32.10	32.10	32.11	88.4	88.5	88.8	6.06	6.07	6.09	4.67	4.67	4.66	6	5.00
	14:07		Middle	3.0	25.20	25.20		8.27	8.27		32.11	32.11		89.1	89.2		6.11	6.12		4.65	4.65		4	
1/11/17	15:20	Fine	Middle	2.5	25.80	25.80	25.80	8.28	8.28	8.28	31.98	31.98	31.99	87.7	87.5	87.6	5.96	5.95	5.96	2.47	2.49	2.43	7	8.00
	15:22		Middle	2.5	25.80	25.80		8.28	8.28		31.99	31.99		87.5	87.7		5.95	5.96		2.37	2.37		9	
3/11/17	15:55	Fine	Middle	2.5	25.30	25.30	25.30	8.27	8.27	8.27	32.17	32.17	32.18	88.0	88.2	88.3	6.03	6.04	6.05	7.17	7.15	7.22	5	6.00
	15:57		Middle	2.5	25.30	25.30		8.27	8.27		32.18	32.18		88.7	88.4		6.07	6.05		7.27	7.27		7	
6/11/17	10:25	Fine	Middle	3.0	24.60	24.60	24.60	8.32	8.32	8.32	32.37	32.37	32.37	86.7	86.6	86.3	6.00	6.00	5.98	9.30	9.27	9.27	13	12.50
	10:27		Middle	3.0	24.60	24.60		8.32	8.32		32.36	32.36		85.7	86.1		5.94	5.96		9.25	9.24		12	
8/11/17	10:22	Fine	Middle	3.5	25.50	25.50	25.50	8.23	8.23	8.23	32.22	32.22	32.23	76.9	76.4	76.7	5.25	5.22	5.24	11.91	11.96	11.84	13	12.50
	10:24		Middle	3.5	25.50	25.50		8.23	8.23		32.24	32.24		76.9	76.5		5.25	5.22		11.85	11.63		12	
10/11/17	11:05	Fine	Middle	2.5	25.10	25.10	25.10	8.20	8.20	8.20	32.30	32.30	32.30	81.8	82.1	81.8	5.61	5.63	5.61	8.05	8.16	8.09	11	11.50
	11:07		Middle	2.5	25.10	25.10		8.20	8.20		32.30	32.30		81.7	81.5		5.61	5.59		8.06	8.07		12	
13/11/17	15:20	Cloudy	Middle	2.5	24.30	24.30	24.25	8.23	8.23	8.23	32.20	32.20	32.20	83.6	83.4	83.4	5.83	5.82	5.82	9.87	9.84	9.80	11	10.50
	15:22		Middle	2.5	24.20	24.20		8.23	8.23		32.20	32.20		83.2	83.2		5.81	5.81		9.75	9.74		10	
15/11/17	17:15	Cloudy	Middle	3.0	24.10	24.10	24.10	8.22	8.22	8.22	32.22	32.22	32.22	83.6	84.1	83.8	5.84	5.87	5.85	8.89	8.87	8.87	10	10.50
	17:17		Middle	3.0	24.10	24.10		8.22	8.22		32.22	32.22		83.5	84.0		5.83	5.86		8.87	8.86		11	
17/11/17	16:30	Fine	Middle	3.0	25.10	25.10	25.10	8.18	8.18	8.18	32.16	32.16	32.13	83.9	84.0	84.0	5.77	5.78	5.77	5.80	5.75	5.73	6	6.50
	16:32		Middle	3.0	25.10	25.10		8.18	8.18		32.10	32.10		84.1	83.8		5.78	5.76		5.69	5.66		7	
20/11/17	8:42	Fine	Middle	2.5	23.30	23.30	23.25	7.94	7.94	7.95	32.40	32.40	32.41	94.3	91.4	95.7	6.68	6.90	6.88	9.24	9.23	9.22	9	8.50
	8:44		Middle	2.5	23.20	23.20		7.96	7.96		32.42	32.42		98.5	98.4		6.98	6.97		9.21	9.20		8	
22/11/17	10:35	Fine	Middle	2.5	23.10	23.10	23.10	8.24	8.24	8.25	32.25	32.25	32.25	88.0	87.8	88.0	6.26	6.25	6.26	8.55	8.50	8.49	9	9.50
	10:37		Middle	2.5	23.10	23.10		8.25	8.25		32.25	32.25		88.0	88.3		6.26	6.28		8.47	8.45		10	
24/11/17	12:20	Fine	Middle	3.0	22.40	22.40	22.40	8.27	8.27	8.27	32.38	32.38	32.38	89.2	89.2	89.1	6.41	6.41	6.40	5.63	5.64	5.70	5	5.00
	12:22		Middle	3.0	22.40	22.40		8.27	8.27		32.38	32.38		89.1	88.9		6.40	6.39		5.75	5.78		5	

Remarks:  
Single underline denotes exceedance over Action Level.  
Double underline denotes exceedance over Limit Level.



**Water Monitoring Result at RW21-P789 - GEC / CRB / SHK  
Mid-Flood Tide**

Date	Time	Weather Condition	Sampling Depth		Water Temperature			pH			Salinity			DO Saturation			DO			Turbidity			Suspended Solids	
					°C		-		ppt		%		mg/L		NTU		mg/L							
			m	Value	Average	Value	Average	Value	Average	Value	Average	Value	Average	Value	Average	Value	Average	Value	Average	Value	Average	Value	Average	
27/10/17	15:57	Fine	Middle	3.5	26.80	26.80	26.85	7.75	7.75	7.78	32.49	32.49	32.49	101.4	100.5	100.5	6.75	6.69	6.54	7.49	7.49	7.50	7	6.50
	15:59		Middle	3.5	26.90	26.90		7.80	7.80		32.49	32.49		99.7	100.5		6.04	6.69		7.50	7.50		6	
30/10/17	14:15	Fine	Middle	3.5	26.20	26.20	26.15	8.26	8.26	8.26	31.88	31.88	31.88	86.3	87.3	86.1	5.83	5.91	5.82	3.78	3.83	3.81	5	4.00
	14:17		Middle	3.5	26.10	26.10		8.26	8.26		31.88	31.88		85.2	85.4		5.77	5.78		3.82	3.81		3	
1/11/17	15:40	Fine	Middle	3.0	26.10	26.10	26.15	8.29	8.29	8.29	32.21	32.21	32.21	91.6	93.0	92.4	6.19	6.28	6.24	4.89	4.66	4.71	5	6.00
	15:42		Middle	3.0	26.20	26.20		8.29	8.29		32.20	32.20		92.6	92.5		6.25	6.24		4.64	4.64		7	
3/11/17	16:30	Fine	Middle	3.5	25.70	25.70	25.70	8.28	8.28	8.28	32.15	32.15	32.15	90.3	90.8	90.4	6.14	6.18	6.15	7.65	7.65	7.63	6	6.50
	16:32		Middle	3.5	25.70	25.70		8.28	8.28		32.15	32.15		90.6	89.7		6.16	6.10		7.62	7.61		7	
6/11/17	7:25	Fine	Middle	4.0	24.80	24.80	24.75	8.25	8.25	8.27	32.51	32.51	32.52	85.2	85.1	84.7	5.88	5.87	5.84	10.03	10.08	<u>10.11</u>	8	8.00
	7:27		Middle	4.0	24.70	24.70		8.28	8.28		32.52	32.52		84.1	84.2		5.80	5.81		10.18	10.16		8	
8/11/17	10:49	Fine	Middle	3.5	25.30	25.30	25.35	8.21	8.21	8.22	32.26	32.26	32.26	76.3	75.6	74.6	5.21	5.17	5.10	10.54	10.54	<u>10.36</u>	12	11.00
	10:51		Middle	3.5	25.40	25.40		8.22	8.22		32.26	32.26		73.4	73.1		5.02	5.00		10.19	10.15		10	
10/11/17	11:30	Fine	Middle	4.0	25.40	25.40	25.45	8.17	8.17	8.18	32.31	32.31	32.31	83.7	84.4	84.0	5.71	5.75	5.73	7.14	7.17	7.21	9	10.00
	11:32		Middle	4.0	25.50	25.50		8.18	8.18		32.30	32.30		84.1	83.9		5.73	5.72		7.25	7.26		11	
13/11/17	16:07	Cloudy	Middle	3.5	24.20	24.20	24.20	8.20	8.20	8.22	32.22	32.22	32.23	66.1	65.0	64.3	4.61	4.53	4.49	11.08	10.83	<u>10.88</u>	10	10.00
	16:07		Middle	3.5	24.20	24.20		8.23	8.23		32.24	32.24		63.5	62.7		4.43	4.37		10.80	10.79		10	
15/11/17	14:50	Cloudy	Middle	4.0	25.10	25.10	25.15	8.21	8.21	8.20	32.07	32.07	32.08	82.6	82.9	83.1	5.67	5.69	5.70	6.54	6.54	6.51	6	5.50
	14:52		Middle	4.0	25.20	25.20		8.19	8.19		32.08	32.08		83.3	83.6		5.72	5.73		6.53	6.44		5	
17/11/17	16:55	Fine	Middle	4.0	25.20	25.20	25.25	8.19	8.19	8.19	32.09	32.09	32.09	84.5	85.0	84.9	5.79	5.81	5.82	5.99	5.93	5.89	7	7.00
	16:57		Middle	4.0	25.30	25.30		8.19	8.19		32.09	32.09		84.8	85.2		5.82	5.84		5.87	5.76		7	
20/11/17	8:56	Fine	Middle	3.5	23.40	23.40	23.30	7.90	7.90	7.93	32.39	32.39	32.42	138.0	135.3	134.9	9.77	9.58	9.56	8.55	8.45	<u>8.48</u>	9	9.50
	8:58		Middle	3.5	23.20	23.20		7.95	7.95		32.44	32.44		133.6	132.8		9.46	9.41		8.45	8.45		10	
22/11/17	10:55	Fine	Middle	4.0	23.30	23.30	23.25	8.23	8.23	8.23	32.28	32.28	32.28	84.8	84.8	85.1	6.01	6.01	6.04	7.42	7.24	7.32	10	10.00
	10:57		Middle	4.0	23.20	23.20		8.23	8.23		32.28	32.28		85.3	85.6		6.05	6.07		7.29	7.32		10	
24/11/17	10:30	Fine	Middle	4.0	22.70	22.70	22.70	8.27	8.27	8.27	32.33	32.33	32.33	83.2	83.5	83.2	5.96	5.98	5.96	6.54	6.50	6.60	5	6.00
	10:32		Middle	4.0	22.70	22.70		8.27	8.27		32.33	32.33		82.8	83.3		5.92	5.97		6.70	6.67		7	

Remarks:  
Single underline denotes exceedance over Action Level.  
Double underline denotes exceedance over Limit Level.



**Water Monitoring Result at WSD19 - Sheung Wan  
Mid-Flood Tide**

Date	Time	Weather Condition	Sampling Depth		Water Temperature			pH			Salinity			DO Saturation			DO		Turbidity			Suspended Solids		
					°C		-		ppt		%		mg/L		NTU		mg/L							
			m	Value	Average	Value	Average	Value	Average	Value	Average	Value	Average	Value	Average	Value	Average	Value	Average	Value	Average			
27/10/17	14:44	Fine	Middle	3.5	27.60	27.60	27.85	6.95	6.95	7.11	32.37	32.37	32.34	118.2	112.1	114.6	7.74	7.33	7.49	8.47	8.18	8.25	8	7.00
	14:46		Middle	3.5	28.10	28.10		7.27	7.27		32.31	32.31		114.1	113.8		7.46	7.43		8.17	8.17		6	
30/10/17	15:15	Fine	Middle	3.5	26.40	26.40	26.40	8.23	8.23	8.24	32.20	32.20	32.22	88.2	88.1	87.9	5.93	5.92	5.91	5.94	5.91	5.84	6	6.50
	15:17		Middle	3.5	26.40	26.40		8.24	8.24		32.24	32.24		87.6	87.7		5.89	5.90		5.76	5.76		7	
1/11/17	16:05	Fine	Middle	3.5	26.10	26.10	26.10	8.27	8.27	8.28	32.38	32.38	32.38	90.4	91.3	90.7	6.10	6.16	6.13	5.52	5.52	5.50	7	7.50
	16:07		Middle	3.5	26.10	26.10		8.28	8.28		32.38	32.38		90.4	90.8		6.14	6.13		5.47	5.50		8	
3/11/17	17:15	Fine	Middle	4.0	26.00	26.00	26.00	8.25	8.25	8.25	32.27	32.27	32.27	88.5	88.3	88.5	5.99	5.97	5.99	6.53	6.44	6.43	4	4.50
	17:17		Middle	4.0	26.00	26.00		8.24	8.24		32.27	32.27		88.6	88.6		5.99	5.99		6.39	6.37		5	
6/11/17	9:00	Fine	Middle	4.0	24.90	24.90	24.75	8.28	8.28	8.28	32.35	32.35	32.36	86.1	87.2	86.4	5.94	6.01	5.96	8.95	8.95	8.95	10	11.00
	9:02		Middle	4.0	24.60	24.60		8.28	8.28		32.36	32.36		86.8	85.4		5.99	5.89		8.95	8.96		12	
8/11/17	8:50	Fine	Middle	3.5	25.40	25.40	25.40	8.18	8.18	8.19	32.31	32.31	32.34	74.1	74.3	73.9	5.06	5.07	5.04	13.29	13.28	13.28	16	17.00
	8:52		Middle	3.5	25.40	25.40		8.19	8.19		32.36	32.36		73.7	73.5		5.03	5.01		13.27	13.27		18	
10/11/17	10:15	Fine	Middle	4.0	25.80	25.80	25.85	8.20	8.20	8.19	32.43	32.43	32.44	82.1	82.6	82.4	5.56	5.60	5.58	9.91	10.04	9.86	12	12.00
	10:17		Middle	4.0	25.90	25.90		8.17	8.17		32.44	32.44		82.5	82.3		5.58	5.58		9.70	9.80		12	
13/11/17	17:06	Cloudy	Middle	3.5	24.40	24.40	24.40	8.17	8.17	8.18	32.20	32.20	32.20	68.0	66.8	66.0	4.72	4.65	4.60	10.02	10.02	10.05	12	13.00
	17:08		Middle	3.5	24.40	24.40		8.19	8.19		32.20	32.20		65.2	64.1		4.53	4.48		10.07	10.07		14	
15/11/17	15:50	Cloudy	Middle	3.5	24.70	24.70	24.70	8.18	8.18	8.18	32.21	32.21	32.21	85.7	85.9	85.9	5.93	5.95	5.95	7.91	7.91	7.91	7	7.00
	15:52		Middle	3.5	24.70	24.70		8.18	8.18		32.21	32.21		85.9	85.9		5.95	5.95		7.92	7.90		7	
17/11/17	15:05	Fine	Middle	3.5	26.00	26.00	26.10	8.14	8.14	8.13	31.87	31.87	31.87	81.7	82.8	82.3	5.53	5.60	5.57	8.40	8.25	8.26	6	5.50
	15:07		Middle	3.5	26.20	26.20		8.11	8.11		31.86	31.86		82.4	82.3		5.57	5.56		8.21	8.19		5	
20/11/17	7:30	Fine	Middle	3.5	23.70	23.70	23.60	6.80	6.80	6.92	32.18	32.18	32.20	163.3	161.4	161.8	11.52	11.39	11.42	10.34	10.32	10.32	11	11.00
	7:32		Middle	3.5	23.50	23.50		7.04	7.04		32.22	32.22		161.5	160.9		11.40	11.35		10.31	10.31		11	
22/11/17	9:30	Fine	Middle	3.5	22.90	22.90	22.85	8.22	8.22	8.22	32.22	32.22	32.22	86.0	86.1	85.9	6.14	6.15	6.14	7.67	7.66	7.66	11	10.50
	9:32		Middle	3.5	22.80	22.80		8.22	8.22		32.22	32.22		86.0	85.3		6.15	6.10		7.65	7.66		10	
24/11/17	9:55	Fine	Middle	3.5	22.30	22.30	22.30	8.24	8.24	8.25	32.46	32.46	32.47	86.1	85.8	85.6	6.20	6.18	6.17	9.70	9.80	9.79	10	11.00
	9:57		Middle	3.5	22.30	22.30		8.25	8.25		32.47	32.47		85.2	85.2		6.14	6.14		9.80	9.85		12	

Remarks:  
Single underline denotes exceedance over Action Level.  
Double underline denotes exceedance over Limit Level.





**Water Monitoring Result at C7 - Windsor House  
Mid-Ebb Tide**

Date	Time	Weather Condition	Sampling Depth		Water Temperature		pH			Salinity		DO Saturation		DO		Turbidity		Suspended Solids						
					°C		-			ppt		%		mg/L		NTU		mg/L						
					Value	Average	Value	Average	Value	Average	Value	Average	Value	Average	Value	Average	Value	Average	Value	Average				
27/10/17	3:15	Fine	Middle	-	23.70	23.70	23.68	8.02	8.02	8.02	32.59	32.59	32.59	87.5	88.9	88.3	5.76	5.85	5.81	3.39	3.41	3.37	6	6.50
	3:16		Middle	-	23.60	23.70		8.02	8.02		32.59	32.59		88.0	88.6		5.79	5.83		3.40	3.27		7	
30/10/17	8:15	Fine	Middle	-	25.80	25.80	25.75	8.23	8.23	8.24	32.13	32.13	32.14	85.3	85.0	85.0	5.79	5.78	5.78	2.53	2.53	2.53	6	5.00
	8:17		Middle	-	25.70	25.70		8.24	8.24		32.14	32.14		84.8	85.0		5.77	5.78		2.52	2.53		4	
1/11/17	9:20	Fine	Middle	-	25.90	25.90	25.90	8.27	8.27	8.28	32.21	32.21	32.22	86.4	86.8	86.2	5.85	5.86	5.83	4.41	4.41	4.42	6	5.00
	9:22		Middle	-	25.90	25.90		8.28	8.28		32.22	32.22		86.1	85.5		5.83	5.76		4.43	4.42		4	
3/11/17	10:15	Fine	Middle	-	26.10	26.10	26.10	8.27	8.27	8.27	32.07	32.07	32.07	85.8	87.4	86.5	5.80	5.90	5.84	4.64	4.63	4.63	3	2.50
	10:17		Middle	-	26.10	26.10		8.27	8.27		32.06	32.06		86.5	86.1		5.84	5.82		4.63	4.62		2	
6/11/17	15:20	Cloudy	Middle	-	25.80	25.80	25.85	8.27	8.27	8.27	31.65	31.65	31.88	87.5	87.4	87.1	5.93	5.92	5.90	3.58	3.63	3.60	<2	<2
	15:22		Middle	-	25.90	25.90		8.27	8.27		32.10	32.10		86.4	86.9		5.86	5.90		3.60	3.59		<2	
8/11/17	2:15	Fine	Middle	-	24.10	24.10	24.10	7.98	7.99	7.99	32.85	32.85	32.85	82.5	84.0	83.3	5.47	5.56	5.52	2.67	2.98	2.83	7	7.00
	2:16		Middle	-	24.10	24.10		7.99	7.99		32.85	32.85		82.2	84.5		5.44	5.59		2.93	2.73		7	
10/11/17	3:00	Fine	Middle	-	24.60	24.60	24.60	8.01	8.01	8.02	32.79	32.79	32.79	83.6	85.7	83.9	5.78	5.92	5.80	4.87	4.93	4.89	3	3.00
	3:01		Middle	-	24.60	24.60		8.03	8.03		32.79	32.79		82.3	84.1		5.68	5.81		4.88	4.86		3	
13/11/17	11:19	Fine	Middle	-	24.90	24.90	24.90	8.18	8.18	8.18	32.02	32.02	32.03	67.8	67.6	67.6	4.68	4.67	4.67	2.48	2.44	2.42	14	13.00
	11:21		Middle	-	24.90	24.90		8.17	8.17		32.03	32.03		67.6	67.4		4.66	4.65		2.39	2.38		12	
15/11/17	8:40	Cloudy	Middle	-	25.00	25.00	25.00	8.18	8.18	8.18	32.12	32.12	32.12	85.7	86.4	85.9	5.90	5.95	5.92	4.60	4.62	4.64	4	5.00
	8:42		Middle	-	25.00	25.00		8.17	8.17		32.12	32.12		86.0	85.5		5.92	5.89		4.67	4.67		6	
17/11/17	12:10	Fine	Middle	-	25.60	25.60	25.65	8.18	8.17	8.17	32.02	32.02	32.02	87.0	87.6	87.4	5.93	5.93	5.94	3.82	3.83	3.83	5	5.00
	12:12		Middle	-	25.70	25.70		8.17	8.17		32.01	32.01		87.9	87.1		5.98	5.93		3.84	3.83		5	
20/11/17	0:30	Cloudy	Middle	-	22.40	22.40	22.38	7.90	7.91	7.91	32.68	32.68	32.68	90.1	90.9	90.4	6.48	6.54	6.50	4.65	4.58	4.58	7	7.50
	0:31		Middle	-	22.30	22.40		7.91	7.91		32.68	32.68		90.5	90.0		6.51	6.48		4.53	4.56		8	
22/11/17	1:00	Cloudy	Middle	-	21.50	21.50	21.50	7.86	7.86	7.86	32.18	32.18	32.18	86.3	87.1	86.6	6.32	6.38	6.34	5.57	5.60	5.52	4	4.00
	1:01		Middle	-	21.50	21.50		7.86	7.86		32.18	32.18		86.8	86.0		6.36	6.30		5.47	5.45		4	
24/11/17	2:15	Cloudy	Middle	-	19.30	19.30	19.30	8.15	8.15	8.16	32.73	32.73	32.73	88.4	88.0	88.2	6.72	6.90	6.75	5.77	5.48	5.49	18	13.50
	2:16		Middle	-	19.30	19.30		8.16	8.16		32.73	32.73		90.1	86.2		6.85	6.53		5.45	5.27		9	

Remarks:  
Single underline denotes exceedance over Action Level.  
Double underline denotes exceedance over Limit Level.



**Water Monitoring Result at C1 - HKCEC  
Mid-Ebb Tide**

Date	Time	Weather Condition	Sampling Depth		Water Temperature			pH			Salinity			DO Saturation			DO			Turbidity			Suspended Solids	
					°C		-		ppt		%		mg/L		NTU		mg/L							
					Value	Average	Value	Average	Value	Average	Value	Average	Value	Average	Value	Average	Value	Average	Value	Average	Value	Average		
27/10/17	4:40	Fine	Middle	3.0	24.90	24.90	24.85	8.10	8.10	8.10	32.68	32.68	32.68	87.0	87.9	88.2	5.60	5.66	5.68	5.34	5.54	5.40	9	8.50
	4:41		Middle	3.0	24.80	24.80		8.10	8.10		32.68	32.68		88.3	89.6		5.69	5.78		5.68	5.46		5.25	
30/10/17	10:35	Fine	Middle	3.0	25.20	25.20	25.15	8.28	8.28	8.28	32.24	32.24	32.26	87.0	87.2	87.1	5.98	5.99	5.99	6.65	6.66	6.62	6	6.50
	10:37		Middle	3.0	25.10	25.10		8.28	8.28		32.28	32.28		87.2	87.0		5.99	5.98		5.99	6.65		6.52	
1/11/17	11:05	Fine	Middle	2.5	25.50	25.50	25.50	8.31	8.31	8.31	32.29	32.29	33.54	89.6	90.4	89.9	6.11	6.17	6.13	7.02	7.04	7.05	7	7.00
	11:07		Middle	2.5	25.50	25.50		8.31	8.31		37.29	32.29		90.0	89.5		6.14	6.11		6.13	7.06		7.06	
3/11/17	13:35	Fine	Middle	2.5	25.60	25.60	25.60	8.24	8.24	8.24	32.27	32.27	32.27	82.3	85.4	85.6	5.61	5.82	5.83	8.06	8.06	8.12	14	13.50
	13:37		Middle	2.5	25.60	25.60		8.24	8.24		32.27	32.27		86.7	88.1		5.90	6.00		5.83	8.17		8.17	
6/11/17	14:35	Cloudy	Middle	2.5	25.20	25.20	25.20	8.29	8.29	8.29	32.36	32.36	32.36	88.7	89.1	89.0	6.08	6.11	6.10	9.88	9.81	9.79	12	13.00
	14:37		Middle	2.5	25.20	25.20		8.29	8.29		32.36	32.36		88.8	89.2		6.09	6.11		6.10	9.76		9.72	
8/11/17	4:50	Fine	Middle	2.5	23.50	23.50	23.50	8.07	8.07	8.07	32.88	32.88	32.88	87.0	88.6	87.2	5.81	5.93	5.84	8.02	7.93	7.93	8	9.00
	4:51		Middle	2.5	23.50	23.50		8.07	8.07		32.88	32.88		86.0	87.3		5.77	5.83		5.84	7.86		7.89	
10/11/17	4:31	Fine	Middle	3.0	24.30	24.30	24.30	8.18	8.18	8.18	32.96	32.96	32.96	81.3	83.1	81.8	5.64	5.77	5.68	6.68	6.70	6.68	4	4.50
	4:32		Middle	3.0	24.30	24.30		8.18	8.18		32.96	32.96		81.4	81.4		5.65	5.65		5.68	6.72		6.63	
13/11/17	10:03	Fine	Middle	2.5	24.50	24.50	24.50	8.24	8.24	8.24	32.20	32.20	32.21	65.0	64.1	63.8	4.52	4.45	4.43	6.79	6.84	6.83	7	6.50
	10:05		Middle	2.5	24.50	24.50		8.24	8.24		32.21	32.21		63.4	62.6		4.40	4.35		4.43	6.84		6.86	
15/11/17	11:00	Cloudy	Middle	2.5	24.50	24.50	24.50	8.22	8.22	8.23	32.29	32.29	32.29	86.3	86.6	86.7	5.98	6.02	6.01	6.86	6.77	6.79	10	10.50
	11:02		Middle	2.5	24.50	24.50		8.23	8.23		32.29	32.29		87.0	86.8		6.03	6.02		6.01	6.77		6.76	
17/11/17	11:50	Fine	Middle	2.5	25.00	25.00	25.05	8.20	8.20	8.20	32.27	32.27	32.29	82.6	82.7	82.9	5.68	5.68	5.70	6.87	6.76	6.79	7	7.00
	11:52		Middle	2.5	25.10	25.10		8.19	8.19		32.30	32.30		83.1	83.1		5.71	5.72		5.70	6.77		6.76	
20/11/17	3:25	Cloudy	Middle	2.5	22.20	22.20	22.20	7.90	7.91	8.01	32.68	32.68	32.65	91.1	92.7	91.6	6.56	6.67	6.60	7.52	7.54	7.58	7	7.50
	3:26		Middle	2.5	22.20	22.20		8.12	8.12		32.62	32.62		91.2	91.4		6.57	6.59		6.60	7.68		7.57	
22/11/17	4:12	Cloudy	Middle	2.5	21.40	21.40	21.40	8.08	8.08	8.08	32.76	32.76	32.76	86.5	88.5	87.2	6.32	6.46	6.37	6.88	6.94	6.88	8	8.50
	4:13		Middle	2.5	21.40	21.40		8.08	8.08		32.76	32.76		87.2	86.6		6.37	6.33		6.37	6.82		6.86	
24/11/17	4:13	Cloudy	Middle	2.5	18.80	18.80	18.80	8.13	8.13	8.15	32.79	32.79	32.79	85.7	85.4	89.8	7.33	7.31	7.26	6.89	6.91	6.93	4	4.50
	4:14		Middle	2.5	18.80	18.80		8.16	8.16		32.79	32.79		93.8	94.1		7.17	7.21		7.26	6.95		6.97	

Remarks:  
Single underline denotes exceedance over Action Level.  
Double underline denotes exceedance over Limit Level.



**Water Monitoring Result at P1 - HKCEC Phase I  
Mid-Ebb Tide**

Date	Time	Weather Condition	Sampling Depth		Water Temperature			pH			Salinity			DO Saturation		DO		Turbidity		Suspended Solids				
					°C			-			ppt			%		mg/L		NTU		mg/L				
					Value	Average		Value	Average		Value	Average		Value	Average		Value	Average	Value	Average	Value	Average	Value	Average
27/10/17	4:10	Fine	Middle	3.0	23.00	23.00	23.00	8.21	8.21	8.21	32.75	32.75	32.75	86.5	88.6	88.3	5.84	5.98	5.96	5.58	5.62	5.59	7	7.00
	4:11		Middle	3.0	23.00	23.00		8.21	8.21		32.75	32.75		89.2	89.0		6.03	6.00		5.54	5.63		7	
30/10/17	10:15	Fine	Middle	3.0	25.00	25.00	24.95	8.29	8.29	8.29	32.31	32.31	32.31	90.3	90.7	90.4	6.22	6.24	6.23	4.64	4.63	4.64	6	7.00
	10:17		Middle	3.0	24.90	24.90		8.29	8.29		32.31	32.31		89.8	90.9		6.18	6.26		4.64	4.66		8	
1/11/17	10:45	Fine	Middle	2.5	25.50	25.50	25.55	8.29	8.29	8.30	32.31	32.31	32.31	91.8	92.2	91.6	6.25	6.29	6.24	7.31	7.33	7.33	11	10.00
	10:47		Middle	2.5	25.60	25.60		8.30	8.30		32.31	32.31		91.4	90.8		6.23	6.18		7.34	7.34		9	
3/11/17	13:15	Fine	Middle	2.5	26.60	26.60	26.50	8.25	8.26	8.25	32.37	32.37	32.37	92.5	93.7	93.0	6.17	6.22	6.19	7.09	7.10	7.11	8	8.50
	13:17		Middle	2.5	26.40	26.40		8.25	8.25		32.37	32.37		92.9	92.8		6.19	6.19		7.11	7.13		9	
6/11/17	14:15	Cloudy	Middle	2.5	25.50	25.00	25.48	8.27	8.27	8.28	32.37	32.37	32.37	89.8	89.7	89.7	6.10	6.10	6.09	10.04	9.98	9.96	10	9.50
	14:17		Middle	2.5	25.70	25.70		8.28	8.28		32.36	32.36		89.2	89.9		6.06	6.11		9.92	9.91		9	
8/11/17	4:25	Fine	Middle	2.5	23.40	23.40	23.40	8.10	8.10	8.10	32.85	32.85	32.85	87.1	86.6	86.3	5.83	5.80	5.78	6.27	6.29	6.25	8	8.50
	4:26		Middle	2.5	23.40	23.40		8.10	8.10		32.85	32.85		86.3	85.3		5.78	5.71		6.25	6.20		9	
10/11/17	4:05	Fine	Middle	3.0	23.80	23.80	23.80	8.22	8.22	8.22	32.93	32.93	32.93	84.5	83.3	84.1	5.91	5.83	5.88	6.17	6.19	6.22	4	4.00
	4:06		Middle	3.0	23.80	23.80		8.22	8.22		32.93	32.93		85.5	83.1		5.98	5.81		6.23	6.27		4	
13/11/17	10:07	Fine	Middle	2.5	23.90	23.90	23.90	8.24	8.24	8.24	32.36	32.36	32.36	62.7	62.2	64.6	4.60	4.36	4.58	6.41	6.51	6.52	9	10.00
	10:09		Middle	2.5	23.90	23.90		8.24	8.24		32.35	32.35		67.7	65.9		4.74	4.62		6.57	6.58		11	
15/11/17	10:40	Cloudy	Middle	2.5	24.50	24.50	24.55	8.22	8.22	8.22	32.29	32.29	32.29	88.1	88.3	88.4	6.11	6.12	6.12	6.68	6.64	6.60	8	7.00
	10:42		Middle	2.5	24.60	24.60		8.22	8.22		32.29	32.29		88.3	88.7		6.12	6.14		6.54	6.53		6	
17/11/17	11:30	Fine	Middle	2.5	25.20	25.20	25.30	8.18	8.18	8.19	32.33	32.33	32.32	89.3	88.8	88.9	6.11	6.08	6.08	6.35	6.53	6.45	8	7.00
	11:32		Middle	2.5	25.40	25.40		8.19	8.19		32.30	32.30		88.8	88.8		6.07	6.07		6.46	6.46		6	
20/11/17	3:02	Cloudy	Middle	2.5	22.20	22.20	22.20	7.97	7.97	7.98	32.45	32.45	32.47	92.0	93.5	92.7	6.64	6.74	6.69	7.02	6.88	6.89	7	9.00
	3:03		Middle	2.5	22.20	22.20		8.00	7.99		32.48	32.48		93.0	92.2		6.71	6.65		6.86	6.81		11	
22/11/17	3:45	Cloudy	Middle	2.5	21.10	21.10	21.10	8.17	8.17	8.17	32.84	32.84	32.84	88.4	88.6	89.2	6.50	6.52	6.56	6.63	6.60	6.57	8	6.50
	3:46		Middle	2.5	21.10	21.10		8.17	8.17		32.84	32.84		89.9	89.8		6.61	6.60		6.53	6.50		5	
24/11/17	3:45	Cloudy	Middle	2.5	19.40	19.40	19.35	8.22	8.22	8.23	32.90	32.90	32.90	93.8	92.0	93.3	7.11	6.97	7.07	7.03	7.00	6.96	5	4.50
	3:46		Middle	2.5	19.30	19.30		8.23	8.23		32.90	32.90		93.3	93.9		7.08	7.12		6.88	6.91		4	

Remarks:  
Single underline denotes exceedance over Action Level.  
Double underline denotes exceedance over Limit Level.



**Water Monitoring Result at P3 - APA  
Mid-Ebb Tide**

Date	Time	Weather Condition	Sampling Depth		Water Temperature			pH			Salinity			DO Saturation		DO		Turbidity		Suspended Solids				
					°C		-		ppt		%		mg/L		NTU		mg/L							
					Value	Average	Value	Average	Value	Average	Value	Average	Value	Average	Value	Average	Value	Average	Value	Average				
27/10/17	4:15	Fine	Middle	3.0	23.60	23.60	23.60	8.21	8.21	8.21	32.72	32.72	32.72	86.3	86.1	85.3	5.87	5.85	5.80	7.40	7.50	7.46	8	9.00
	4:16		Middle	3.0	23.60	23.60		8.21	8.21		32.72	32.72		84.3	84.6		5.73	5.75		7.52	7.43		10	
30/10/17	10:20	Fine	Middle	3.0	24.80	24.80	24.75	8.29	8.29	8.29	32.27	32.27	32.28	89.5	90.0	89.3	6.18	6.22	6.17	5.83	5.76	5.73	6	5.50
	10:22		Middle	3.0	24.70	24.70		8.29	8.29		32.28	32.28		89.4	88.3		6.18	6.10		5.67	5.66		5	
1/11/17	10:50	Fine	Middle	2.5	25.20	25.20	25.20	8.31	8.31	8.31	32.26	32.26	32.28	90.3	90.1	90.2	6.19	6.18	6.18	6.34	6.37	6.35	8	7.50
	10:52		Middle	2.5	25.20	25.20		8.31	8.31		32.29	32.29		90.2	90.2		6.18	6.18		6.37	6.32		7	
3/11/17	13:20	Fine	Middle	2.5	25.70	25.70	25.75	8.25	8.25	8.25	32.31	32.31	32.31	90.5	91.3	90.7	6.15	6.20	6.17	6.92	6.77	6.83	6	6.50
	13:22		Middle	2.5	25.80	25.80		8.25	8.25		32.31	32.31		90.5	90.6		6.15	6.16		6.77	6.84		7	
6/11/17	14:20	Cloudy	Middle	2.5	24.90	24.90	24.95	8.28	8.28	8.28	32.35	32.35	32.35	90.1	90.2	89.7	6.21	6.21	6.19	9.42	9.51	9.43	8	8.50
	14:22		Middle	2.5	25.00	25.00		8.28	8.28		32.35	32.35		89.6	88.8		6.17	6.18		9.46	9.31		9	
8/11/17	4:31	Fine	Middle	2.5	23.30	23.30	23.30	8.10	8.10	8.10	32.87	32.87	32.87	86.9	88.4	87.7	5.83	5.93	5.88	8.17	8.19	8.14	8	8.50
	4:32		Middle	2.5	23.30	23.30		8.10	8.10		32.87	32.87		87.9	87.4		5.89	5.86		8.10	8.08		9	
10/11/17	4:11	Fine	Middle	3.0	24.10	24.10	24.10	8.16	8.16	8.16	32.95	32.95	32.95	82.5	81.0	81.4	5.74	5.65	5.67	6.33	6.30	6.28	4	4.00
	4:12		Middle	3.0	24.10	24.10		8.16	8.16		32.95	32.95		80.6	81.6		5.61	5.68		6.25	6.22		4	
13/11/17	10:11	Fine	Middle	2.5	23.70	23.70	23.70	8.24	8.24	8.24	32.36	32.36	32.36	71.5	70.0	68.8	5.03	4.92	4.84	7.30	7.22	7.26	8	8.50
	10:13		Middle	2.5	23.70	23.70		8.24	8.24		32.36	32.36		67.3	66.5		4.74	4.68		7.25	7.26		9	
15/11/17	10:45	Cloudy	Middle	2.5	24.20	24.20	24.20	8.23	8.23	8.23	32.30	32.30	32.30	85.5	85.4	85.5	5.96	5.96	5.96	6.02	6.02	6.03	6	6.00
	10:47		Middle	2.5	24.20	24.20		8.23	8.23		32.30	32.30		85.4	85.6		5.96	5.97		6.02	6.05		6	
17/11/17	11:35	Fine	Middle	2.5	24.70	24.70	24.75	8.20	8.20	8.20	32.30	32.30	32.30	86.7	86.8	86.6	5.99	6.00	5.99	5.82	5.83	5.82	8	8.00
	11:37		Middle	2.5	24.80	24.80		8.20	8.20		32.30	32.30		86.6	86.3		5.98	5.97		5.86	5.76		8	
20/11/17	3:07	Cloudy	Middle	2.5	22.00	22.00	22.00	8.11	8.11	8.11	32.68	32.68	32.68	90.1	90.2	90.3	6.52	6.52	6.53	7.56	7.58	7.60	8	7.00
	3:08		Middle	2.5	22.00	22.00		8.11	8.11		32.68	32.68		90.0	90.9		6.51	6.57		7.60	7.65		6	
22/11/17	3:51	Cloudy	Middle	2.5	21.00	21.00	21.00	8.20	8.20	8.20	32.83	32.83	32.83	89.4	91.2	90.6	6.58	6.72	6.67	7.16	7.08	7.08	7	8.00
	3:52		Middle	2.5	21.00	21.00		8.20	8.20		32.83	32.83		91.1	90.5		6.71	6.66		7.03	7.05		9	
24/11/17	3:50	Cloudy	Middle	2.5	19.30	19.30	19.30	8.29	8.29	8.29	32.95	32.95	32.95	88.6	89.5	90.0	6.72	6.73	6.82	7.71	7.62	7.61	15	9.00
	3:51		Middle	2.5	19.30	19.30		8.29	8.29		32.95	32.95		90.4	91.4		6.88	6.93		7.57	7.55		3	

Remarks:  
Single underline denotes exceedance over Action Level.  
Double underline denotes exceedance over Limit Level.



**Water Monitoring Result at P4 - SOC  
Mid-Ebb Tide**

Date	Time	Weather Condition	Sampling Depth		Water Temperature			pH			Salinity			DO Saturation		DO		Turbidity		Suspended Solids				
					°C			-			ppt			%		mg/L		NTU		mg/L				
					Value	Average		Value	Average		Value	Average		Value	Average		Value	Average	Value	Average	Value	Average	Value	Average
27/10/17	4:25	Fine	Middle	3.0	23.30	23.30	23.30	8.19	8.19	8.19	32.73	32.73	32.73	89.2	91.9	91.1	6.00	6.18	6.13	5.15	5.13	5.12	8	8.50
	4:26		Middle	3.0	23.30	23.30		8.19	8.19		32.73	32.73		91.1	92.2		6.13	6.20		5.10	5.08		9	
30/10/17	10:25	Fine	Middle	3.0	24.50	24.50	24.50	8.30	8.30	8.30	32.27	32.27	32.27	87.7	88.0	87.3	6.05	6.08	6.04	6.24	6.19	6.19	6	6.00
	10:27		Middle	3.0	24.50	24.50		8.30	8.30		32.27	32.27		87.3	86.3		6.03	5.99		6.17	6.16		6	
1/11/17	10:55	Fine	Middle	2.5	25.10	25.10	25.10	8.31	8.31	8.31	37.28	32.28	33.54	87.8	88.4	88.0	6.03	6.07	6.04	6.11	6.11	6.11	8	7.00
	10:57		Middle	2.5	25.10	25.10		8.31	8.31		32.29	32.29		88.1	87.6		6.05	6.01		6.11	6.12		6	
3/11/17	13:25	Fine	Middle	2.5	25.40	25.40	25.45	8.25	8.25	8.25	32.31	32.31	32.31	88.3	90.0	89.1	6.02	6.14	6.09	6.90	6.99	7.04	5	5.50
	13:27		Middle	2.5	25.50	25.50		8.25	8.25		32.31	32.31		88.9	89.1		6.09	6.10		7.12	7.15		6	
6/11/17	14:25	Cloudy	Middle	2.5	25.00	25.00	25.00	8.28	8.28	8.28	32.34	32.34	32.34	88.0	89.4	89.0	6.05	6.14	6.12	8.22	8.23	8.25	10	9.00
	14:27		Middle	2.5	25.00	25.00		8.28	8.28		32.34	32.34		89.3	89.3		6.14	6.14		8.24	8.30		8	
8/11/17	4:37	Fine	Middle	2.5	23.70	23.70	23.70	8.12	8.12	8.12	32.85	32.85	32.85	85.7	83.2	84.8	5.71	5.55	5.65	6.50	6.32	6.32	7	7.50
	4:38		Middle	2.5	23.70	23.70		8.12	8.12		32.85	32.85		86.2	84.0		5.74	5.60		6.25	6.22		8	
10/11/17	4:23	Fine	Middle	3.0	23.80	23.80	23.80	8.23	8.23	8.23	32.93	32.93	32.93	85.8	86.0	85.4	6.00	6.02	5.97	7.78	7.81	7.81	6	5.50
	4:24		Middle	3.0	23.80	23.80		8.23	8.23		32.93	32.93		85.1	84.5		5.95	5.91		7.86	7.77		5	
13/11/17	10:15	Fine	Middle	2.5	23.80	23.80	23.85	8.24	8.24	8.24	32.34	32.34	32.34	67.9	67.0	67.4	4.76	4.71	4.73	7.10	7.11	7.11	11	10.00
	10:17		Middle	2.5	23.90	23.90		8.23	8.23		32.34	32.34		66.9	67.7		4.69	4.75		7.12	7.11		9	
15/11/17	10:50	Cloudy	Middle	2.5	24.20	24.20	24.25	8.23	8.23	8.23	32.29	32.29	32.29	86.1	86.2	85.7	6.00	6.00	5.97	6.12	6.24	6.28	7	6.50
	10:52		Middle	2.5	24.30	24.30		8.23	8.23		32.29	32.29		85.1	85.4		5.93	5.95		6.38	6.39		6	
17/11/17	11:40	Fine	Middle	2.5	24.60	24.60	24.65	8.20	8.20	8.20	32.30	32.30	32.30	85.7	86.7	86.5	5.93	6.00	5.98	5.88	6.12	6.02	6	6.00
	11:42		Middle	2.5	24.70	24.70		8.20	8.20		32.29	32.29		86.6	87.0		5.99	6.01		6.08	6.00		6	
20/11/17	3:13	Cloudy	Middle	2.5	22.30	22.30	22.30	8.07	8.07	8.07	32.64	32.64	32.64	89.8	89.7	89.3	6.46	6.46	6.43	6.74	6.72	6.71	7	7.50
	3:14		Middle	2.5	22.30	22.30		8.07	8.07		32.64	32.64		89.5	88.1		6.44	6.34		6.70	6.68		8	
22/11/17	3:58	Cloudy	Middle	2.5	21.30	21.30	21.28	8.18	8.18	8.18	32.82	32.82	32.82	87.5	88.7	88.1	6.42	6.50	6.46	7.16	7.02	7.11	7	6.50
	3:59		Middle	2.5	21.20	21.30		8.18	8.18		32.82	32.82		88.3	87.7		6.47	6.43		7.14	7.10		6	
24/11/17	3:55	Cloudy	Middle	2.5	19.00	19.00	19.00	8.31	8.31	8.31	32.96	32.96	32.96	94.0	93.4	93.9	7.17	7.13	7.17	6.25	6.27	6.24	5	5.50
	3:56		Middle	2.5	19.00	19.00		8.31	8.31		32.96	32.96		94.2	94.0		7.19	7.17		6.22	6.21		6	

Remarks:  
Single underline denotes exceedance over Action Level.  
Double underline denotes exceedance over Limit Level.



**Water Monitoring Result at P5 - WCT / RT / IT  
Mid-Ebb Tide**

Date	Time	Weather Condition	Sampling Depth		Water Temperature			pH			Salinity			DO Saturation		DO		Turbidity		Suspended Solids				
					°C		-		ppt		%		mg/L		NTU		mg/L							
					Value	Average	Value	Average	Value	Average	Value	Average	Value	Average	Value	Average	Value	Average	Value	Average				
27/10/17	4:31	Fine	Middle	3.0	23.10	23.10	23.15	8.17	8.18	8.18	32.74	32.74	32.74	88.5	89.0	88.9	5.95	5.98	5.97	4.32	4.30	4.30	5	6.00
	4:32		Middle	3.0	23.20	23.20		8.18	8.18		32.74	32.74		89.3	88.6		6.01	5.95		4.29	4.27		7	
30/10/17	10:30	Fine	Middle	4.0	24.50	24.50	24.50	8.30	8.30	8.30	32.28	32.28	32.28	90.2	90.8	90.7	6.26	6.30	6.29	5.66	5.72	5.73	7	7.00
	10:32		Middle	4.0	24.50	24.50		8.30	8.30		32.27	32.27		90.8	90.9		6.30	6.31		5.78	5.77		7	
1/11/17	11:00	Fine	Middle	2.5	25.20	25.20	25.20	8.30	8.30	8.30	32.28	32.28	32.29	88.4	88.3	88.8	6.05	6.04	6.09	5.98	5.99	6.01	8	8.50
	11:02		Middle	2.5	25.20	25.20		8.30	8.30		32.29	32.29		89.0	89.5		6.13	6.14		6.04	6.03		9	
3/11/17	13:30	Fine	Middle	2.5	25.50	25.50	25.55	8.25	8.25	8.25	32.30	32.30	32.30	89.3	90.0	89.7	6.09	6.14	6.12	7.26	7.25	7.27	8	8.00
	13:32		Middle	2.5	25.60	25.60		8.25	8.25		32.30	32.30		90.3	89.2		6.15	6.08		7.26	7.31		8	
6/11/17	14:30	Cloudy	Middle	2.5	25.10	25.10	25.15	8.28	8.28	8.29	32.35	32.35	32.36	89.6	89.6	88.9	6.14	6.14	6.09	8.98	8.96	8.96	8	7.50
	14:31		Middle	2.5	25.20	25.20		8.29	8.29		32.36	32.36		88.4	87.8		6.06	6.02		8.96	8.95		7	
8/11/17	4:45	Fine	Middle	2.5	23.80	23.80	23.80	8.14	8.14	8.14	32.87	32.87	32.87	86.6	87.2	86.8	5.76	5.82	5.78	7.94	7.88	7.90	8	9.00
	4:46		Middle	2.5	23.80	23.80		8.14	8.14		32.87	32.87		87.7	85.6		5.84	5.70		7.86	7.90		10	
10/11/17	4:28	Fine	Middle	3.0	24.10	24.10	24.10	8.20	8.20	8.20	32.97	32.97	32.97	87.7	87.1	86.6	6.10	6.06	6.02	7.96	7.93	7.91	6	6.00
	4:29		Middle	3.0	24.10	24.10		8.20	8.20		32.97	32.97		85.5	86.0		5.95	5.98		7.88	7.85		6	
13/11/17	10:19	Fine	Middle	2.5	24.10	24.10	24.10	8.23	8.23	8.23	32.32	32.32	32.33	66.3	65.6	64.7	4.63	4.58	4.52	5.96	5.95	5.93	9	8.50
	10:21		Middle	2.5	24.10	24.10		8.23	8.23		32.34	32.34		64.0	62.9		4.47	4.40		5.91	5.91		8	
15/11/17	10:55	Cloudy	Middle	2.5	24.30	24.30	24.30	8.23	8.23	8.23	32.30	32.30	32.30	86.1	86.1	86.0	5.99	5.99	5.99	7.76	7.66	7.71	8	8.00
	10:57		Middle	2.5	24.30	24.30		8.23	8.23		32.29	32.29		85.6	86.3		5.96	6.01		7.65	7.76		8	
17/11/17	11:45	Fine	Middle	2.5	24.80	24.80	24.80	8.20	8.20	8.20	32.30	32.30	32.30	84.9	85.1	85.2	5.86	5.87	5.84	6.03	6.00	5.94	5	5.50
	11:47		Middle	2.5	24.80	24.80		8.20	8.20		32.30	32.30		86.6	84.3		5.83	5.81		5.84	5.89		6	
20/11/17	3:20	Cloudy	Middle	2.5	22.30	22.30	22.30	8.14	8.14	8.14	32.67	32.67	32.67	88.2	87.8	87.7	6.35	6.32	6.31	6.65	6.53	6.52	12	9.00
	3:21		Middle	2.5	22.30	22.30		8.14	8.14		32.67	32.67		87.0	87.6		6.26	6.31		6.50	6.41		6	
22/11/17	4:05	Cloudy	Middle	2.5	21.50	21.50	21.50	8.13	8.13	8.13	32.81	32.81	32.81	87.5	87.0	87.9	6.38	6.36	6.41	6.85	6.88	6.84	8	8.50
	4:06		Middle	2.5	21.50	21.50		8.13	8.13		32.81	32.81		88.7	88.2		6.47	6.43		6.80	6.83		9	
24/11/17	4:03	Cloudy	Middle	2.5	19.10	19.10	19.10	8.26	8.26	8.26	32.96	32.96	32.96	91.0	91.5	90.8	6.93	6.96	6.91	6.72	6.74	6.71	2	4.50
	4:04		Middle	2.5	19.10	19.10		8.26	8.26		32.96	32.96		90.3	90.2		6.87	6.86		6.72	6.67		7	

Remarks:  
Single underline denotes exceedance over Action Level.  
Double underline denotes exceedance over Limit Level.



**Water Monitoring Result at RW21-P789 - GEC / CRB / SHK  
Mid-Ebb Tide**

Date	Time	Weather Condition	Sampling Depth		Water Temperature			pH			Salinity			DO Saturation		DO		Turbidity		Suspended Solids				
					°C		-		ppt		%		mg/L		NTU		mg/L							
					Value	Average	Value	Average	Value	Average	Value	Average	Value	Average	Value	Average	Value	Average	Value	Average				
27/10/17	3:55	Fine	Middle	4.0	24.10	24.10	24.10	8.05	8.05	8.05	32.75	32.75	32.75	86.2	86.3	85.7	5.64	5.64	5.61	2.12	2.14	2.12	6	6.50
	3:56		Middle	4.0	24.10	24.10		8.05	8.05		32.75	32.75		85.1	85.3		5.57	5.58		2.10	2.13		7	
30/10/17	7:30	Fine	Middle	4.0	24.90	24.90	24.85	8.25	8.25	8.26	32.29	32.29	32.29	78.3	79.6	79.6	5.42	5.48	5.49	4.02	4.03	4.04	5	4.50
	7:32		Middle	4.0	24.80	24.80		8.27	8.27		32.29	32.29		80.1	80.2		5.52	5.53		4.04	4.06		4	
1/11/17	8:45	Fine	Middle	3.5	25.60	25.60	25.75	8.31	8.31	8.31	32.40	32.40	32.40	87.5	88.0	87.8	5.94	5.97	5.95	6.31	6.40	6.36	6	7.00
	8:47		Middle	3.5	25.90	25.90		8.30	8.30		32.39	32.39		87.9	87.7		5.96	5.94		6.37	6.37		8	
3/11/17	9:45	Fine	Middle	3.5	25.40	25.40	25.30	8.32	8.32	8.31	32.27	32.27	32.28	85.1	84.8	84.6	5.82	5.81	5.79	5.76	5.75	5.77	7	6.00
	9:47		Middle	3.5	25.20	25.20		8.29	8.29		32.28	32.28		84.3	84.2		5.77	5.77		5.75	5.83		5	
6/11/17	14:50	Cloudy	Middle	3.5	25.50	25.50	25.50	8.28	8.28	8.28	32.35	32.35	32.35	85.5	85.9	91.2	5.84	5.90	5.90	6.67	6.70	6.68	6	6.50
	14:52		Middle	3.5	25.50	25.50		8.28	8.28		32.35	32.35		96.7	96.7		5.92	5.92		6.69	6.67		7	
8/11/17	4:08	Fine	Middle	3.5	24.60	24.60	24.60	8.03	8.04	8.04	30.74	30.74	30.74	78.6	78.0	78.1	5.23	5.19	5.20	1.30	1.24	1.25	5	6.00
	4:09		Middle	3.5	24.60	24.60		8.04	8.04		30.74	30.74		77.5	78.3		5.15	5.21		1.20	1.27		7	
10/11/17	3:45	Fine	Middle	4.0	24.40	24.40	24.45	8.11	8.11	8.11	32.93	32.93	32.93	84.8	85.8	85.4	5.87	5.94	5.92	5.56	5.54	5.52	4	4.00
	3:46		Middle	4.0	24.60	24.40		8.11	8.11		32.93	32.93		86.0	85.1		5.95	5.91		5.52	5.46		4	
13/11/17	10:48	Fine	Middle	3.5	24.60	24.60	24.60	8.23	8.23	8.23	32.08	32.08	32.08	60.9	61.1	63.2	4.22	4.24	4.22	5.84	5.84	5.80	10	9.00
	10:50		Middle	3.5	24.60	24.60		8.22	8.22		32.08	32.08		61.2	69.4		4.24	4.19		5.76	5.75		8	
15/11/17	8:10	Cloudy	Middle	4.0	24.70	24.70	24.80	8.17	8.17	8.20	32.47	32.47	33.72	88.1	89.6	89.0	6.07	6.17	6.13	8.00	8.02	7.99	6	5.50
	8:12		Middle	4.0	24.90	24.90		8.22	8.22		37.46	32.46		89.4	88.7		6.16	6.11		7.98	7.97		5	
17/11/17	12:00	Fine	Middle	4.0	25.20	25.20	25.25	8.19	8.19	8.19	32.22	32.22	32.23	86.6	86.4	86.7	5.93	5.92	5.94	8.56	8.60	8.61	12	11.50
	12:02		Middle	4.0	25.30	25.30		8.19	8.19		32.23	32.23		86.6	87.0		5.93	5.96		8.65	8.62		11	
20/11/17	2:50	Cloudy	Middle	3.5	22.20	22.20	22.20	7.96	7.96	7.96	31.46	31.46	31.46	90.3	91.4	91.0	6.56	6.64	6.62	4.03	4.05	4.06	4	3.50
	2:51		Middle	3.5	22.20	22.20		7.96	7.96		31.46	31.46		91.1	91.3		6.63	6.64		4.07	4.10		3	
22/11/17	3:26	Cloudy	Middle	3.5	21.40	21.40	21.40	8.00	8.00	8.00	31.56	31.56	31.56	85.1	84.7	84.9	6.26	6.24	6.25	4.47	4.36	4.36	5	5.00
	3:27		Middle	3.5	21.40	21.40		8.00	8.00		31.56	31.56		84.2	85.6		6.19	6.30		4.32	4.30		5	
24/11/17	3:30	Cloudy	Middle	3.5	19.50	19.50	19.50	7.95	7.95	7.95	31.92	32.62	31.95	92.1	90.5	91.9	7.02	6.90	7.01	3.41	3.30	3.37	5	4.00
	3:31		Middle	3.5	19.50	19.50		7.95	7.95		31.62	31.62		92.3	92.6		7.04	7.06		3.34	3.42		3	

Remarks:  
Single underline denotes exceedance over Action Level.  
Double underline denotes exceedance over Limit Level.



**Water Monitoring Result at WSD19 - Sheung Wan  
Mid-Ebb Tide**

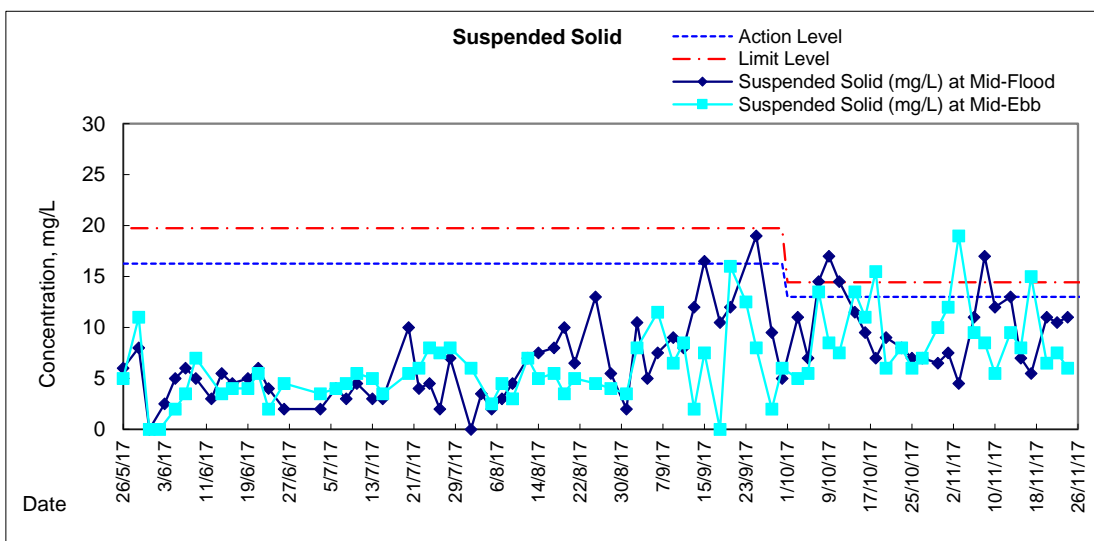
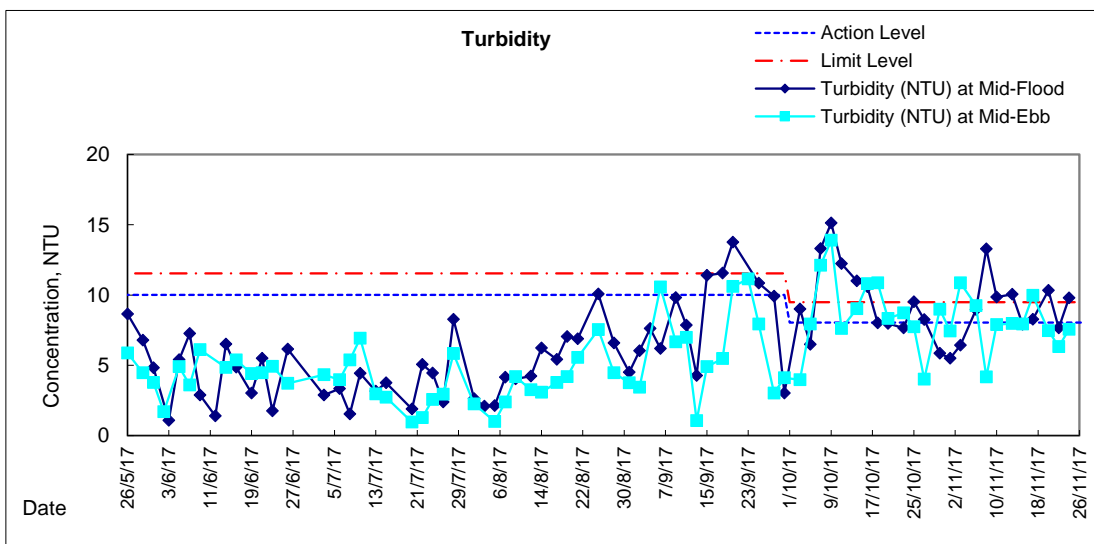
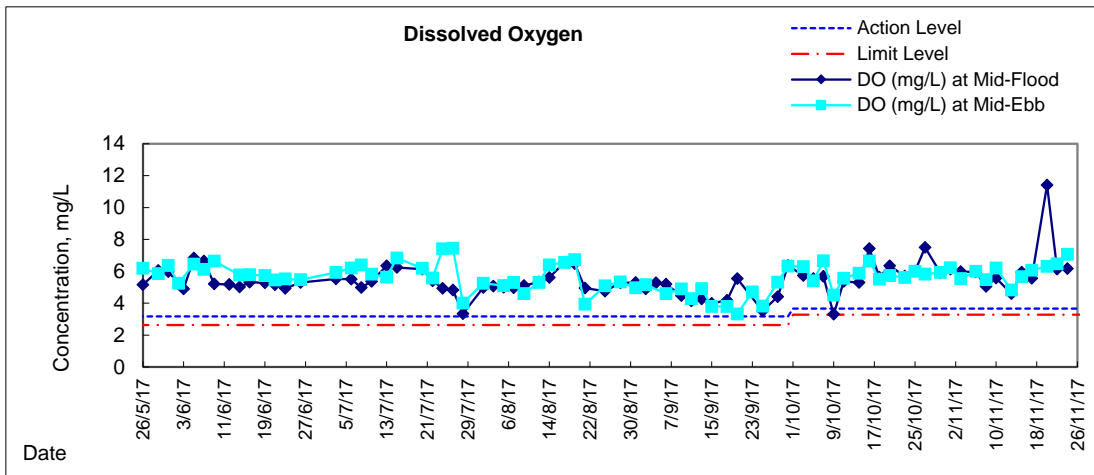
Date	Time	Weather Condition	Sampling Depth		Water Temperature		pH			Salinity		DO Saturation		DO		Turbidity		Suspended Solids						
					°C		-			ppt		%		mg/L		NTU		mg/L						
					Value	Average	Value	Average	Value	Average	Value	Average	Value	Average	Value	Average	Value	Average	Value	Average				
27/10/17	4:55	Fine	Middle	4.0	23.80	23.80	23.75	8.10	8.10	8.10	32.59	32.59	32.49	87.8	89.0	88.6	5.77	5.85	5.82	4.07	4.10	4.02	5	7.00
	4:56		Middle	4.0	23.70	23.70		8.10	8.10	8.10	32.39	32.39		88.4	89.1		5.81	5.86		4.00	3.89		9	
30/10/17	9:00	Fine	Middle	4.0	25.00	25.00	24.95	8.27	8.27	8.28	32.29	32.29	32.29	85.7	86.5	86.0	5.90	5.96	5.92	9.05	9.06	<u>8.97</u>	10	10.00
	9:02		Middle	4.0	24.90	24.90		8.28	8.29	8.28	32.28	32.28		86.1	85.7		5.93	5.90		8.97	8.81		10	
1/11/17	10:05	Fine	Middle	3.5	25.40	25.40	25.40	8.25	8.25	8.26	32.33	32.33	32.34	91.1	91.7	91.3	6.22	6.26	6.23	7.41	7.43	7.43	12	12.00
	10:07		Middle	3.5	25.40	25.40		8.27	8.27	8.26	32.34	32.34		91.6	90.6		6.25	6.18		7.44	7.44		12	
3/11/17	11:30	Fine	Middle	3.5	26.20	26.20	26.30	8.20	8.20	8.20	32.37	32.37	32.37	83.5	82.0	82.6	5.61	5.51	5.55	10.83	10.89	<u>10.86</u>	18	<u>19.00</u>
	11:32		Middle	3.5	26.40	26.40		8.20	8.20	8.20	32.36	32.36		82.2	82.7		5.52	5.55		10.86	10.84		20	
6/11/17	13:00	Cloudy	Middle	3.5	25.40	25.40	25.40	8.27	8.27	8.27	32.38	32.38	32.38	87.4	88.4	87.9	5.97	6.03	6.00	9.33	9.24	<u>9.24</u>	10	9.50
	13:02		Middle	3.5	25.40	25.40		8.26	8.26	8.26	32.37	32.37		87.8	88.0		5.99	6.01		9.20	9.20		9	
8/11/17	5:05	Fine	Middle	3.5	24.30	24.30	24.30	8.01	8.01	8.00	32.67	32.67	32.66	81.9	83.5	82.7	5.41	5.52	5.46	4.24	4.17	4.17	9	8.50
	5:06		Middle	3.5	24.30	24.30		7.99	7.99	8.00	32.67	32.64		81.9	83.3		5.41	5.51		4.19	4.07		8	
10/11/17	4:56	Fine	Middle	4.0	24.10	24.10	24.10	8.14	8.14	8.14	32.93	32.93	32.93	89.9	88.5	89.4	6.18	6.16	6.20	7.96	7.90	7.89	5	5.50
	4:57		Middle	4.0	24.10	24.10		8.15	8.14	8.14	32.93	32.93		89.5	89.6		6.23	6.24		7.89	7.82		6	
13/11/17	8:00	Fine	Middle	3.5	24.30	24.30	24.25	8.25	8.25	8.24	32.32	32.32	32.33	70.2	69.2	69.3	4.89	4.82	4.82	7.85	8.03	7.97	9	9.50
	8:02		Middle	3.5	24.20	24.20		8.23	8.23	8.23	32.34	32.34		68.8	68.8		4.79	4.79		8.01	8.00		10	
15/11/17	9:30	Cloudy	Middle	3.5	24.80	24.80	24.85	8.18	8.18	8.18	32.22	32.22	32.23	82.2	82.4	82.2	5.67	5.68	5.67	7.88	7.93	7.93	8	8.00
	9:32		Middle	3.5	24.90	24.90		8.18	8.18	8.18	32.23	32.23		82.1	82.0		5.66	5.66		7.96	7.93		8	
17/11/17	10:15	Fine	Middle	4.0	25.00	25.00	25.00	8.22	8.22	8.21	32.42	32.42	32.42	88.2	88.5	88.2	6.06	6.09	6.06	10.00	10.00	<u>9.97</u>	14	<u>15.00</u>
	10:17		Middle	4.0	25.00	25.00		8.20	8.20	8.21	32.44	32.40		88.4	87.7		6.07	6.03		9.95	9.92		16	
20/11/17	3:35	Cloudy	Middle	3.5	22.50	22.50	22.50	7.88	7.88	7.88	32.38	32.38	32.38	87.8	88.4	87.8	6.31	6.35	6.31	7.43	7.40	7.47	6	6.50
	3:36		Middle	3.5	22.50	22.50		7.88	7.88	7.88	32.38	32.38		88.2	87.0		6.34	6.25		7.49	7.54		7	
22/11/17	4:27	Cloudy	Middle	3.5	21.60	21.60	21.60	7.92	7.92	7.92	32.50	32.50	32.50	89.3	89.1	88.6	6.51	6.50	6.46	6.17	6.24	6.33	8	7.50
	4:28		Middle	3.5	21.60	21.60		7.92	7.93	7.92	32.50	32.50		88.6	87.4		6.46	6.37		6.44	6.45		7	
24/11/17	4:30	Cloudy	Middle	3.5	19.20	19.20	19.20	8.07	8.07	8.07	32.89	32.89	32.89	92.0	94.1	93.0	6.99	7.15	7.07	7.54	7.50	7.56	6	6.00
	4:31		Middle	3.5	19.20	19.20		8.07	8.07	8.07	32.89	32.89		93.3	92.5		7.09	7.03		7.52	7.69		6	

Remarks:  
Single underline denotes exceedance over Action Level.  
Double underline denotes exceedance over Limit Level.



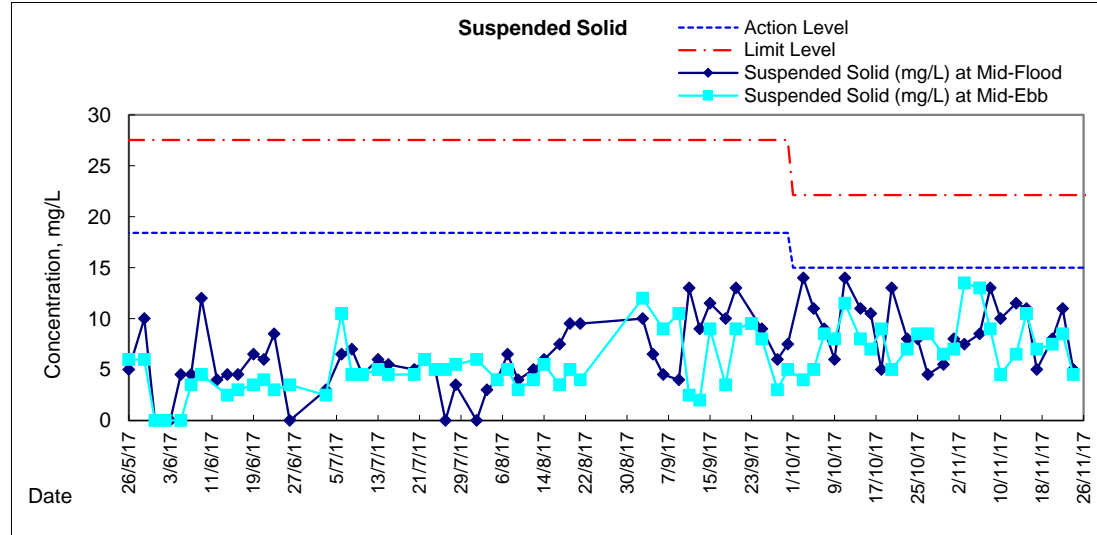
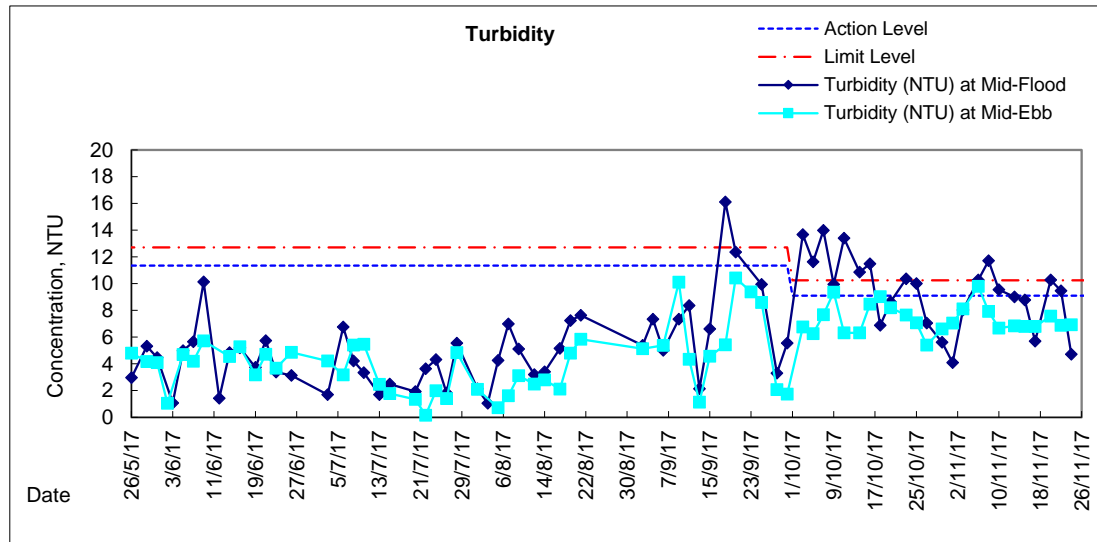
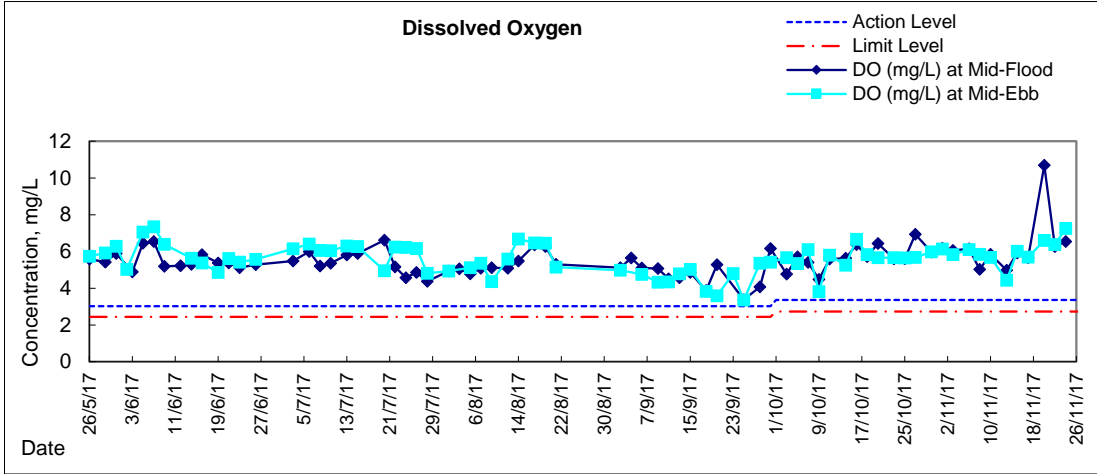


# Graphic Presentation of Water Quality Result of WSD19 - Sheung Wan



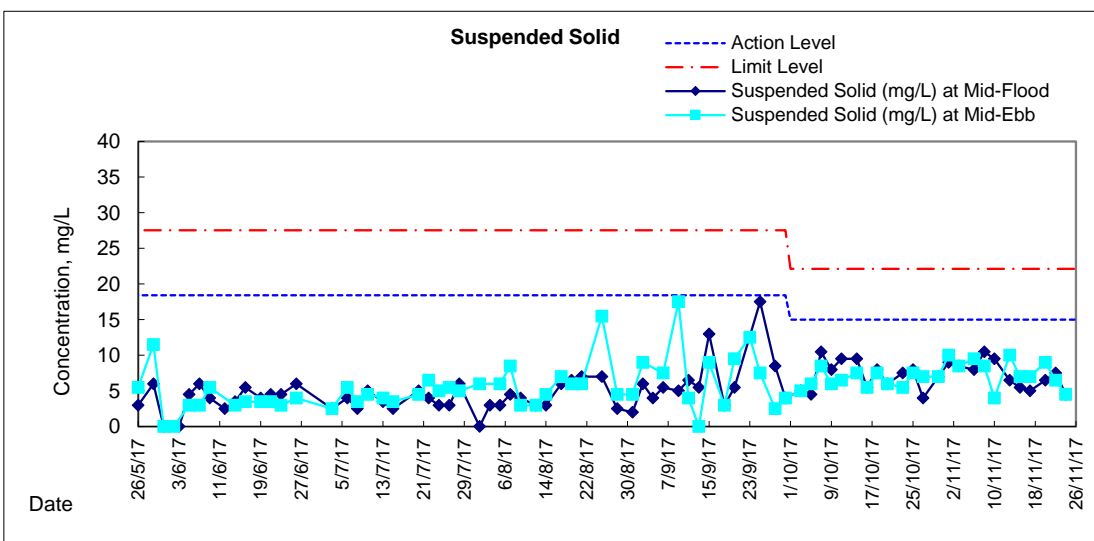
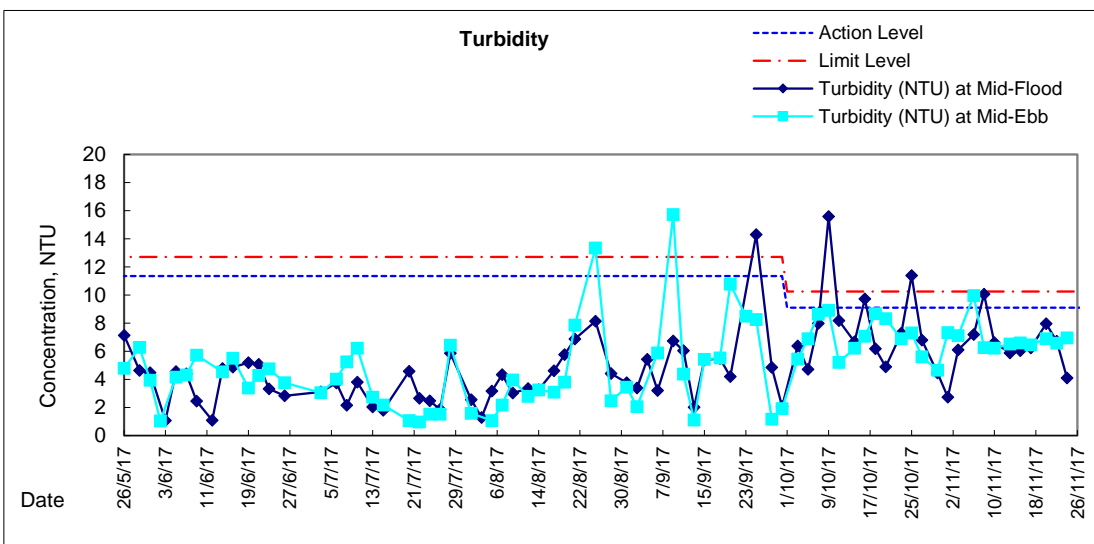
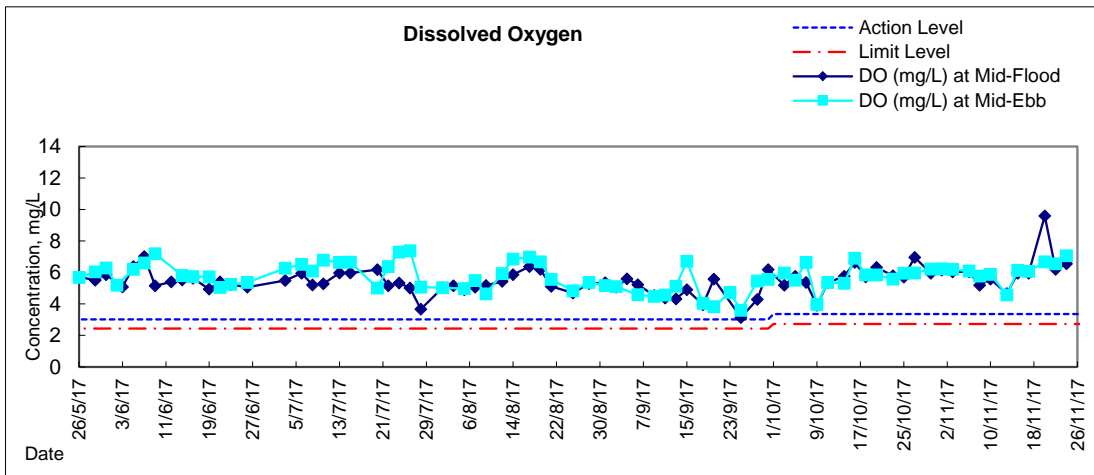


### Graphic Presentation of Water Quality Result of C1 - HKCEC



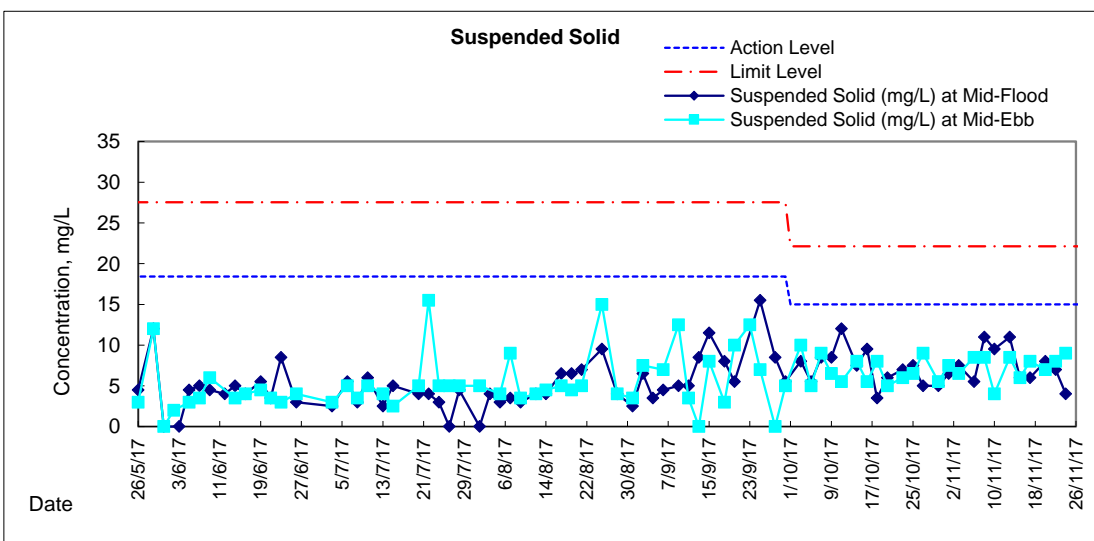
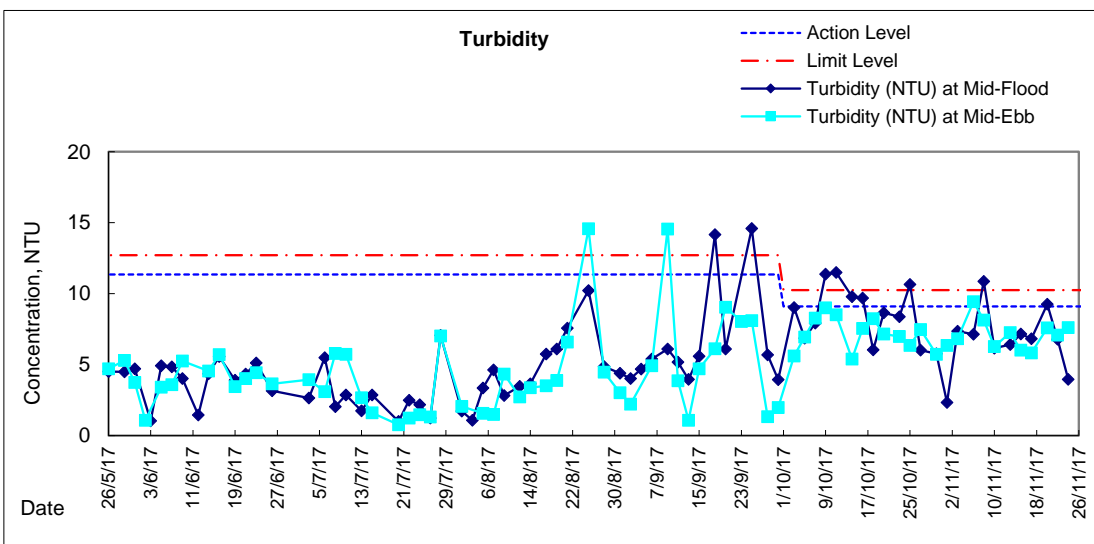
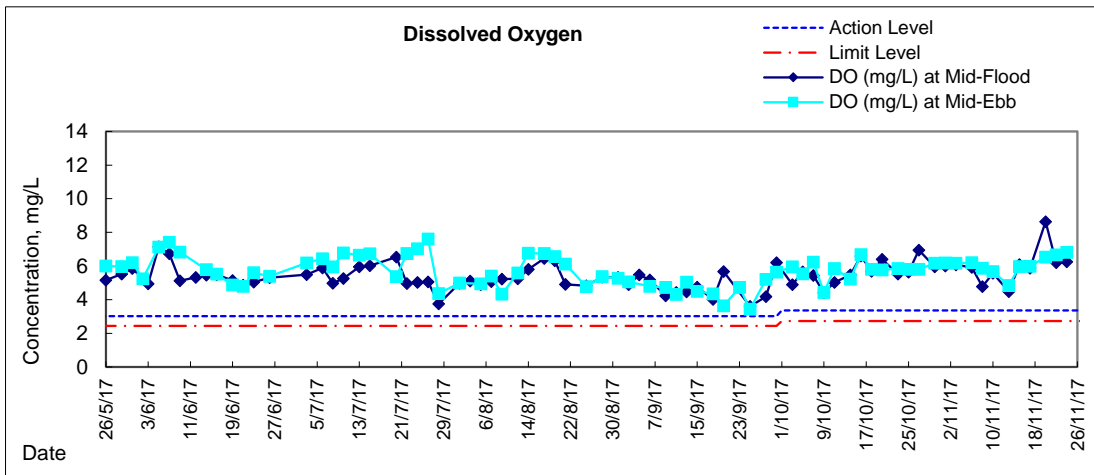


# Graphic Presentation of Water Quality Result of P1 - HKCEC Phase I



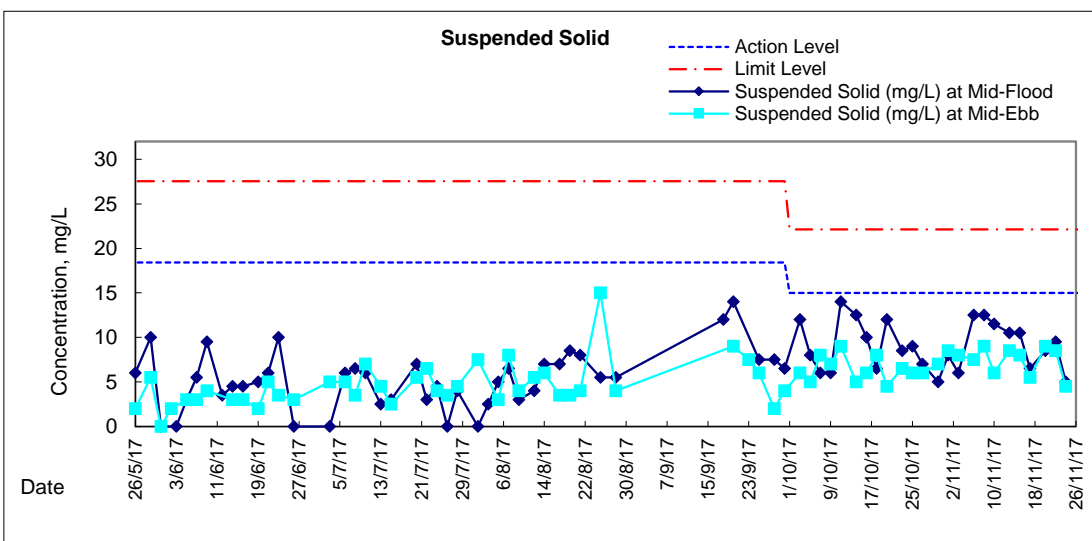
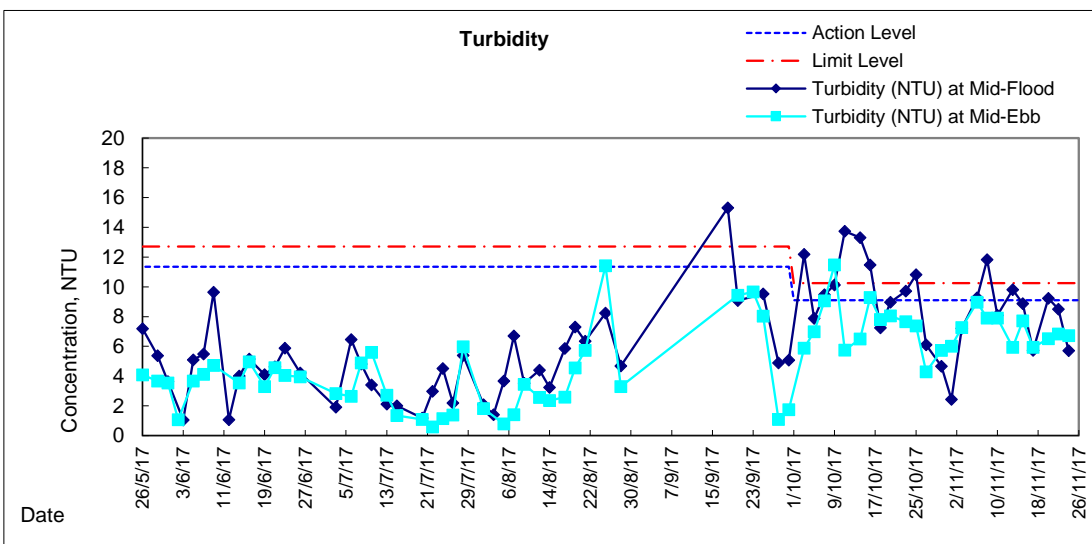
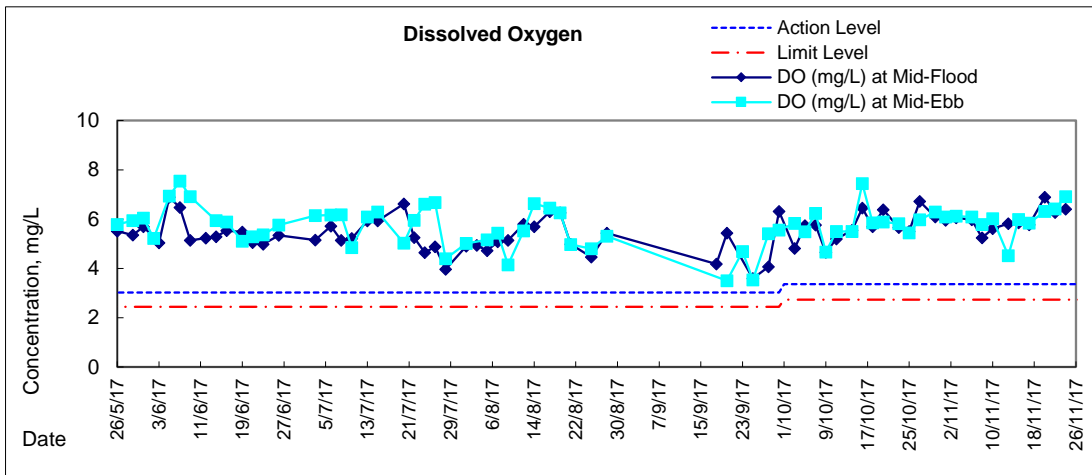


### Graphic Presentation of Water Quality Result of P3 - APA



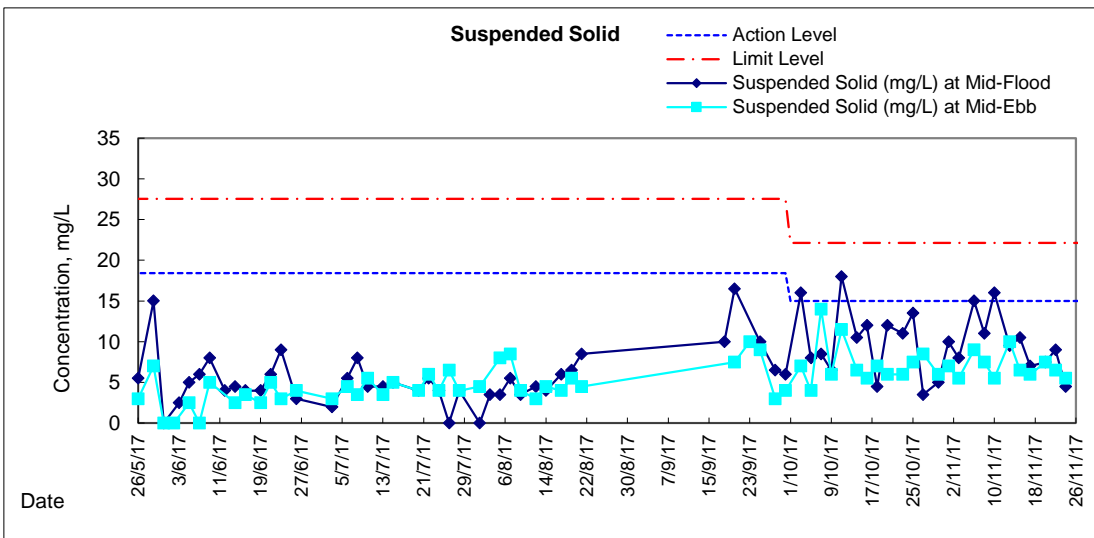
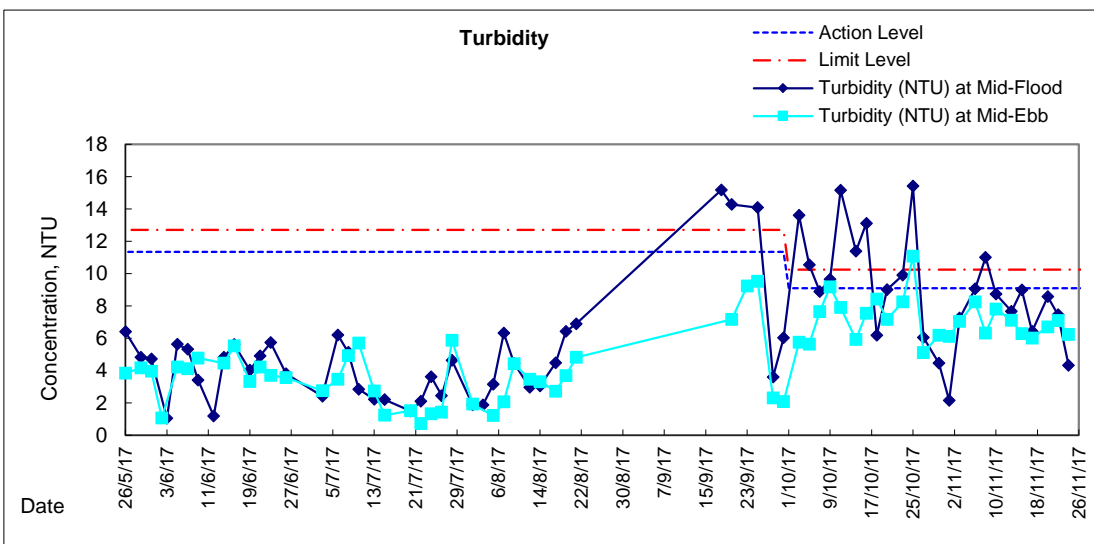
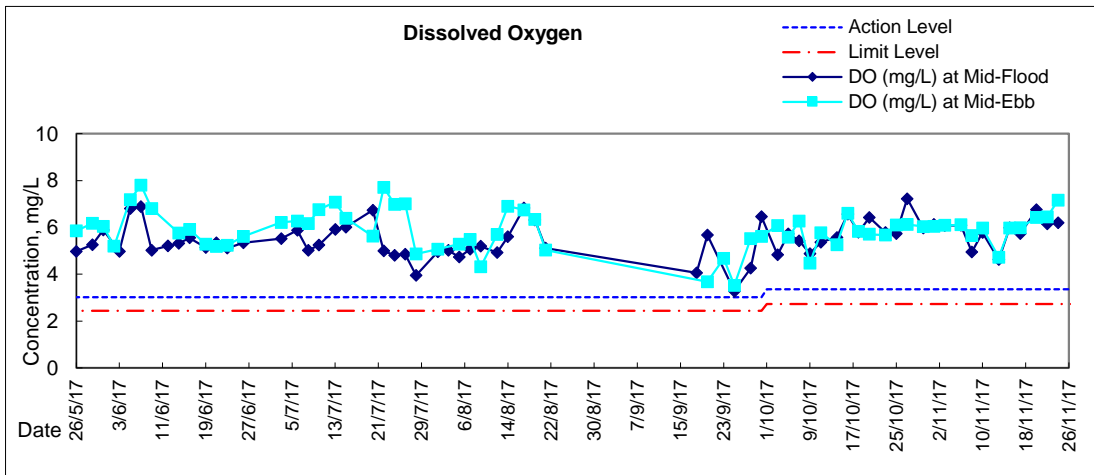


### Graphic Presentation of Water Quality Result of P5 - WCT / RT / IT



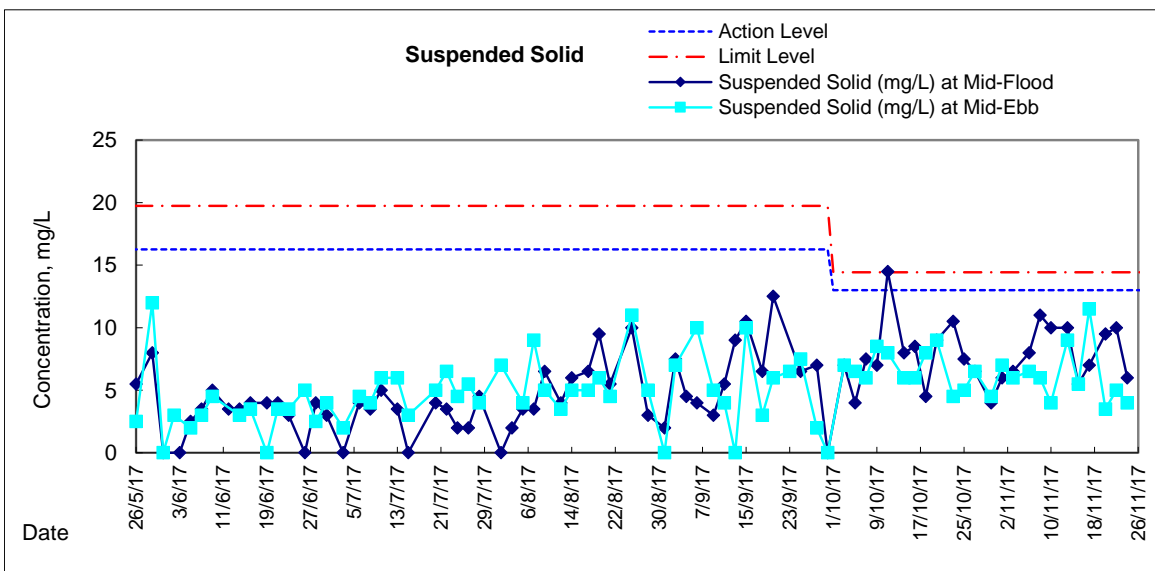
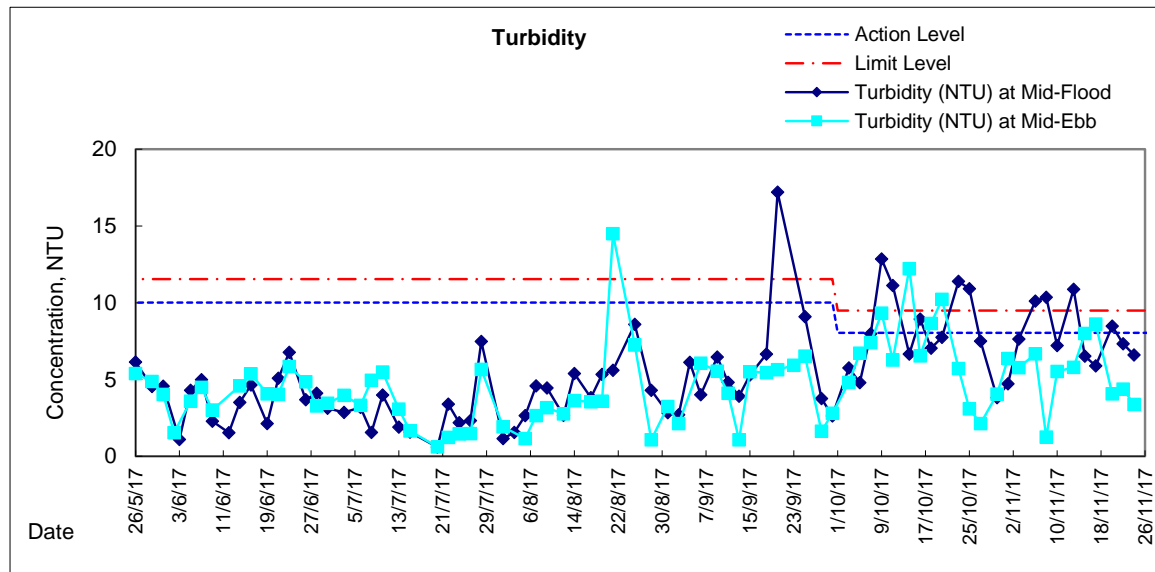
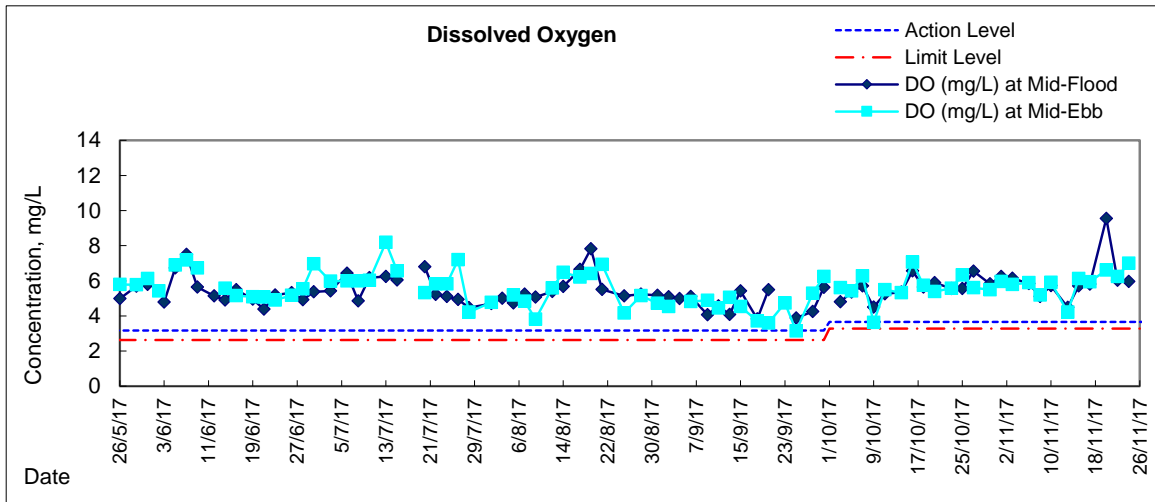


# Graphic Presentation of Water Quality Result of P4 - SOC



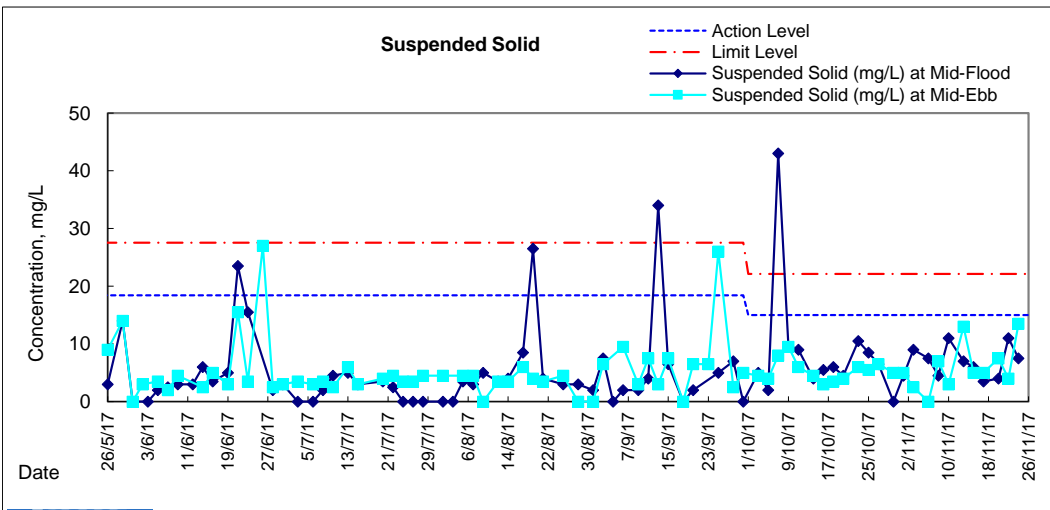
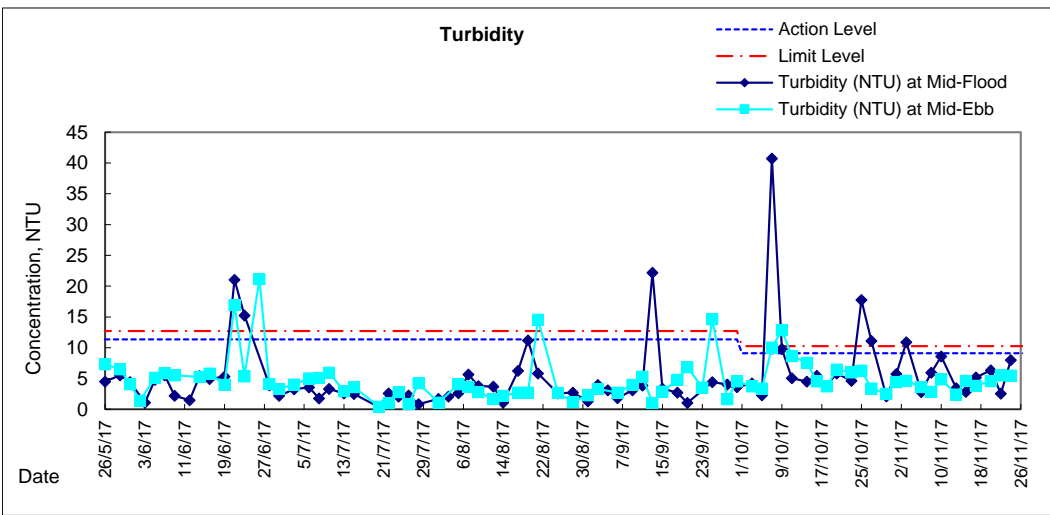
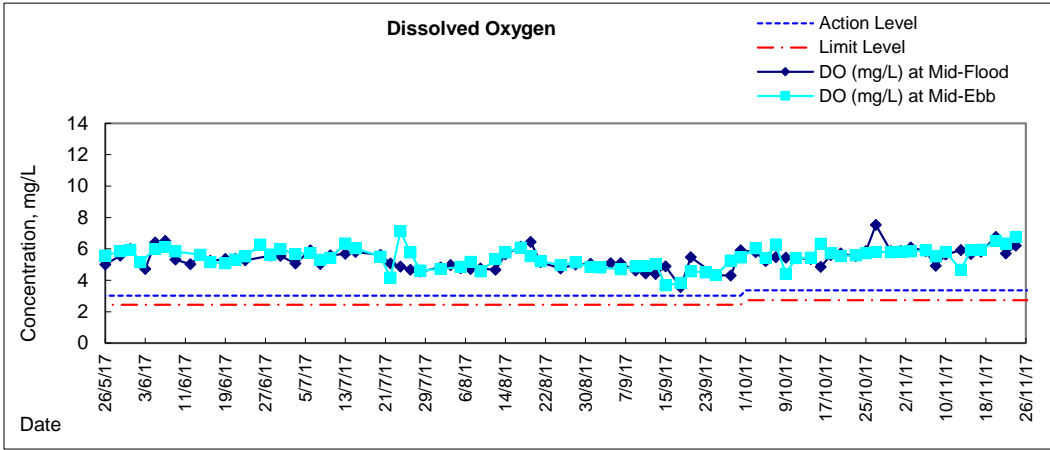


# Graphic Presentation of Water Quality Result of RW21-P789 - GEC/CRC/SHK





# Graphic Presentation of Water Quality Result of C7 - Windsor House







**Water Monitoring Result at C6 - Excelsior Hotel  
Mid-Flood Tide**

Date	Time	Weather Condition	Sampling Depth m		Water Temperature °C			pH			Salinity ppt			DO Saturation %			DO mg/L		
					Value	Average	Value	Average	Value	Average	Value	Average	Value	Average	Value	Average			
			Surface																
27/10/17	-	Fine	Surface	-	-	-	-	-	-	-	-	-	-	-	-	-	-	-	-
	16:31		Middle	1.5	27.70	27.70	27.7	7.86	7.86	7.9	31.83	31.83	31.8	75.8	75.7	75.8	4.99	4.93	4.96
	-		Bottom	-	-	-	-	-	-	-	-	-	-	-	-	-	-	-	-
30/10/17	14:40	Fine	Surface	1.0	25.90	25.90	25.9	8.19	8.19	8.2	30.67	30.67	30.7	69.2	69.5	69.4	4.72	4.74	4.73
	-		Middle	2.0	-	-	-	-	-	-	-	-	-	-	-	-	-	-	-
	14:42		Bottom	3.0	26.10	26.10	26.1	8.18	8.18	8.2	31.30	31.30	31.3	81.1	81.4	81.3	5.51	5.52	5.52
1/11/17	13:45	Fine	Surface	1.0	26.20	26.20	26.2	8.24	8.24	8.2	31.49	31.49	31.5	86.1	87.1	86.6	5.80	5.87	5.84
	-		Middle	2.0	-	-	-	-	-	-	-	-	-	-	-	-	-	-	-
	13:47		Bottom	3.0	26.00	26.00	26.0	8.26	8.26	8.3	31.90	31.90	31.9	90.1	90.3	90.2	6.11	6.12	6.12
3/11/17	-	Fine	Surface	-	-	-	-	-	-	-	-	-	-	-	-	-	-	-	-
	16:45		Middle	1.5	25.80	25.80	25.8	8.27	8.27	8.3	31.63	31.63	31.6	87.1	88.0	87.6	5.93	5.99	5.96
	-		Bottom	-	-	-	-	-	-	-	-	-	-	-	-	-	-	-	-
6/11/17	7:45	Fine	Surface	1.0	24.50	24.50	24.5	8.25	8.25	8.3	31.52	31.52	31.5	78.7	80.0	79.4	5.48	5.57	5.53
	-		Middle	2.0	-	-	-	-	-	-	-	-	-	-	-	-	-	-	-
	7:47		Bottom	3.0	24.30	24.30	24.3	8.25	8.25	8.3	31.48	31.48	31.5	87.5	88.1	87.8	6.13	6.17	6.15
8/11/17	-	Fine	Surface	-	-	-	-	-	-	-	-	-	-	-	-	-	-	-	-
	11:03		Middle	1.5	25.90	25.90	25.9	8.21	8.21	8.2	31.96	31.96	32.0	71.4	68.1	69.8	9.84	9.62	9.73
	-		Bottom	-	-	-	-	-	-	-	-	-	-	-	-	-	-	-	-
10/11/17	14:15	Fine	Surface	1.0	27.10	27.10	27.1	8.20	8.20	8.2	31.73	31.73	31.7	83.0	81.8	82.4	5.50	5.42	5.46
	-		Middle	2.0	-	-	-	-	-	-	-	-	-	-	-	-	-	-	-
	14:17		Bottom	3.0	26.90	26.90	26.9	8.18	8.18	8.2	31.86	31.86	31.9	84.4	84.2	84.3	5.69	5.67	5.68
13/11/17	13:50	Cloudy	Surface	1.0	24.40	24.40	24.4	8.26	8.26	8.3	31.59	31.59	31.6	78.8	79.4	79.1	5.49	5.52	5.51
	-		Middle	2.0	-	-	-	-	-	-	-	-	-	-	-	-	-	-	-
	13:52		Bottom	3.0	24.40	24.40	24.4	8.20	8.20	8.2	31.99	31.99	32.0	83.3	83.9	83.6	5.80	5.84	5.82
15/11/17	-	Cloudy	Surface	-	-	-	-	-	-	-	-	-	-	-	-	-	-	-	-
	15:00		Middle	1.5	24.70	24.70	24.7	8.20	8.20	8.2	31.84	31.84	31.8	82.3	83.2	82.8	5.70	5.75	5.73
	-		Bottom	-	-	-	-	-	-	-	-	-	-	-	-	-	-	-	-
17/11/17	18:07	Fine	Surface	1.0	24.90	24.90	24.9	8.17	8.17	8.2	31.79	31.79	31.8	80.6	80.6	80.6	5.57	5.57	5.57
	-		Middle	2.0	-	-	-	-	-	-	-	-	-	-	-	-	-	-	-
	18:05		Bottom	3.0	25.10	25.10	25.1	8.18	8.18	8.2	31.85	31.85	31.9	88.6	88.9	88.8	6.10	6.12	6.11
20/11/17	9:14	Fine	Surface	1.0	23.10	23.10	23.1	7.89	7.89	7.9	31.80	31.80	31.8	162.8	157.5	160.2	11.62	11.24	11.43
	0:00		Middle	2.0	-	-	-	-	-	-	-	-	-	-	-	-	-	-	-
	9:16		Bottom	3.0	23.50	23.50	23.5	7.96	7.96	8.0	32.03	32.03	32.0	138.6	138.6	138.6	9.81	9.66	9.74
22/11/17	-	Fine	Surface	-	-	-	-	-	-	-	-	-	-	-	-	-	-	-	-
	8:00		Middle	1.5	22.60	22.60	22.6	8.10	8.10	8.1	31.47	31.47	31.5	70.4	70.3	70.4	5.07	5.06	5.07
	-		Bottom	-	-	-	-	-	-	-	-	-	-	-	-	-	-	-	-
24/11/17	13:15	Fine	Surface	1.0	22.80	22.80	22.8	8.21	8.21	8.2	31.36	31.36	31.4	77.5	77.8	77.7	5.77	5.79	5.78
	-		Middle	2.0	-	-	-	-	-	-	-	-	-	-	-	-	-	-	-
	13:17		Bottom	3.0	22.70	22.70	22.7	8.24	8.24	8.2	31.71	31.74	31.7	82.9	82.2	82.6	5.95	5.90	5.93





### Graphic Presentation of Enhanced Water Monitoring Results (DO) at C6 - Excelsior Hotel

